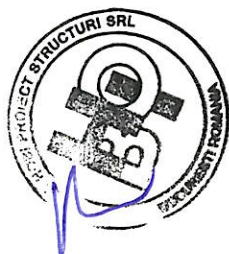


## BREVIAR DE CALCUL

Intocmit  
Ing. Catalin Biclineru





## TRONSON II – CORP DE LEGATURA



TRONSON II – CORP DE LEGATURA

### 1. DESCRIEREA CONSTRUCTIILOR

Tronsonul II (Corp de legatura) este o constructie cu regim de inaltime P+1E, cu structura de rezistenta in cadre din beton armat. Tronsonul II se va executa pe amplasamentul corpului de centrala termica care se desfiinteaza. Tronsonul II face legatura intre tronsonul I (Corp tribunal) si tronsonul IV (Corp tribunal extindere).

Corpul de legatura se va executa cu rost seismic fata de cele doua corpuri de cladire (cel existent si cel nou propus).

**Sistemul de fundare** al corpului de legatura este de tipul fundatii continue formate din bloc de beton simplu si cuzinet armat amplasate pe cele doua directii principale ale constructiei. Blocul de beton simplu are latimea de 60 cm si este executat din beton de clasa C20/25. Cota inferioara a blocului de fundatii se afla la -2.45 m fata de cota +0.00 a constructiei amplasata cu 85 cm deasupra cotei terenului amenajat. Pe zona de alipire la calcan cu tronsonul IV (Corp

**BREVIAR DE CALCUL - REPARATII CAPITALE, CONSOLIDARE, RESTAURARE, EXTINDERE ȘI REFACERE  
ÎMPREJMUIRE LA SEDIUL JUDECĂTORIEI HUȘI**

tribunal extindere), tronson cu subsol general, cota inferioara a blocului de beton simplu din fundatie al corpului de legatura se afla la -4.80m cota la aceeași cota inferioara cu fundatia subsolului tronsonului IV. Diferenta de cote de fundare ale tronsonului II se vor executa prin fundarea in trepte pe zona de laipire la calcan. Pardoseala este din beton armat cu grosimea de 15 cm armata cu plasa sudata SPPB Ø6 (100x100) si beton de clasa C25/30.

**Suprastructura** corpului de legatura este realizata dintr-un sistem spatial format din cadre din beton armat dispuse dupa 2 directii principale ortogonale. Dimensiunile si modul de realizare si armare a elementelor din beton armat, stalpi si grinzi, au rezultat in urma dimensionarii structurii in conformitate cu normele, standardele si normativele in vigoare.

Placa peste parter este din beton armat cu grosimea de 15 cm si a fost conceputa si dimensionata astfel incat sa asigure pe de o parte o izolare fonica corespunzatoare, pe de alta parte sa asigure efectul de saiba rigida, indeformabila in planul ei si capabila sa oblige elementele orizontale de rezistenta sa conlucreze in preluare fortelor care pot aparea in constructie in timpul exploatarei uzuale sau in timpul unor miscari orizontale cum ar fi cele care apar in timpul seismului. Sistemul spatial a fost calculat, dimensionat si conceput astfel incat sa poata prelua eforturile care apar in structura in timpul exploatarei normale sau pe durata actiunii unor incarcari exceptionale (in Romania cea mai uzuala este seismul) cu un anumit grad de siguranta.

Grinzile au rol de a prelua incarcările de exploatare din placi si fatade, dar si rol seismic, acestea fiind disipatoare de energie. Grinzile principale au dimensiuni de 30x40 cm realizate din beton armat C25/30

Dimensiunile geometrice ale stalpilor au rezultat in functie de nivelul de incarcare cu forta axiala atat din gruparea fundamentala cat si din cea speciala. S-a calculat dimensiunea stalpului astfel incat zona comprimata din stalp sa nu depaseasca jumatatea din inaltimea lui activa, conditie de ductilitate ce a dictat dimensiunea sa finala. Sectiunile stalpilor au rezultat 30x30cm.

Sarpanta peste etaj este din lemn, iar invelitoarea este din tabla.

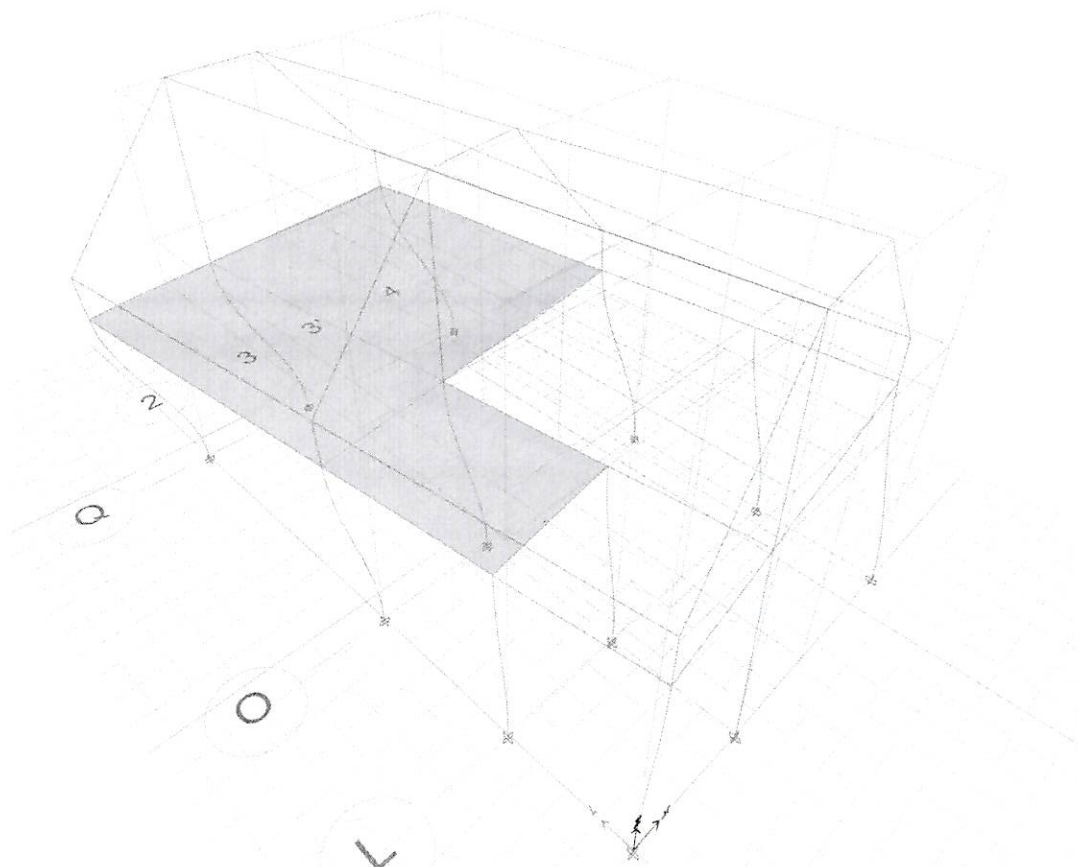
## **2. REZULTATE ANALIZA MODALA**

MODUL	PERIOADA	UX	UY	UZ	RX	RY	RZ
	sec						
1	0.354	0.7505	0.0061	0	0.0015	0.0281	0.2597
2	0.327	0.0077	0.9757	0	0.1159	0.0004	0.000023
3	0.262	0.24090	0.0016	0	0.0001	0.386	0.7395



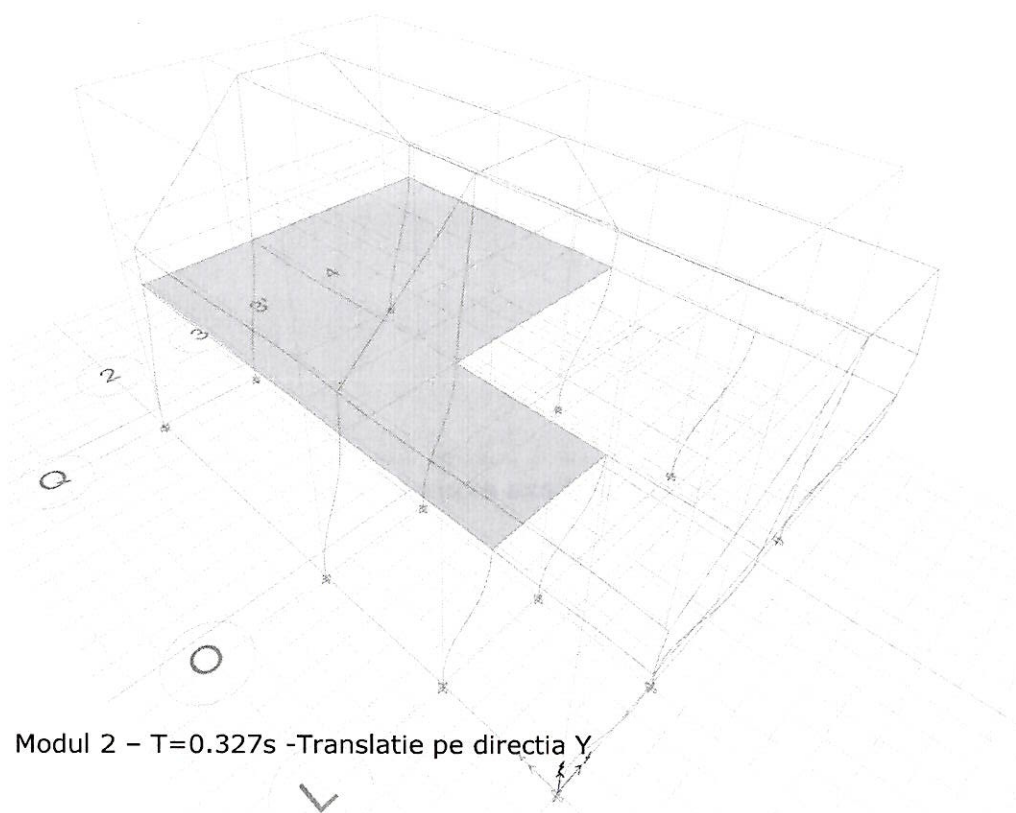
### 3. CARACTERISTICI DINAMICE

3-D View: Mode Shape (Modal) - Mode 1 - Period 0.33383383277197

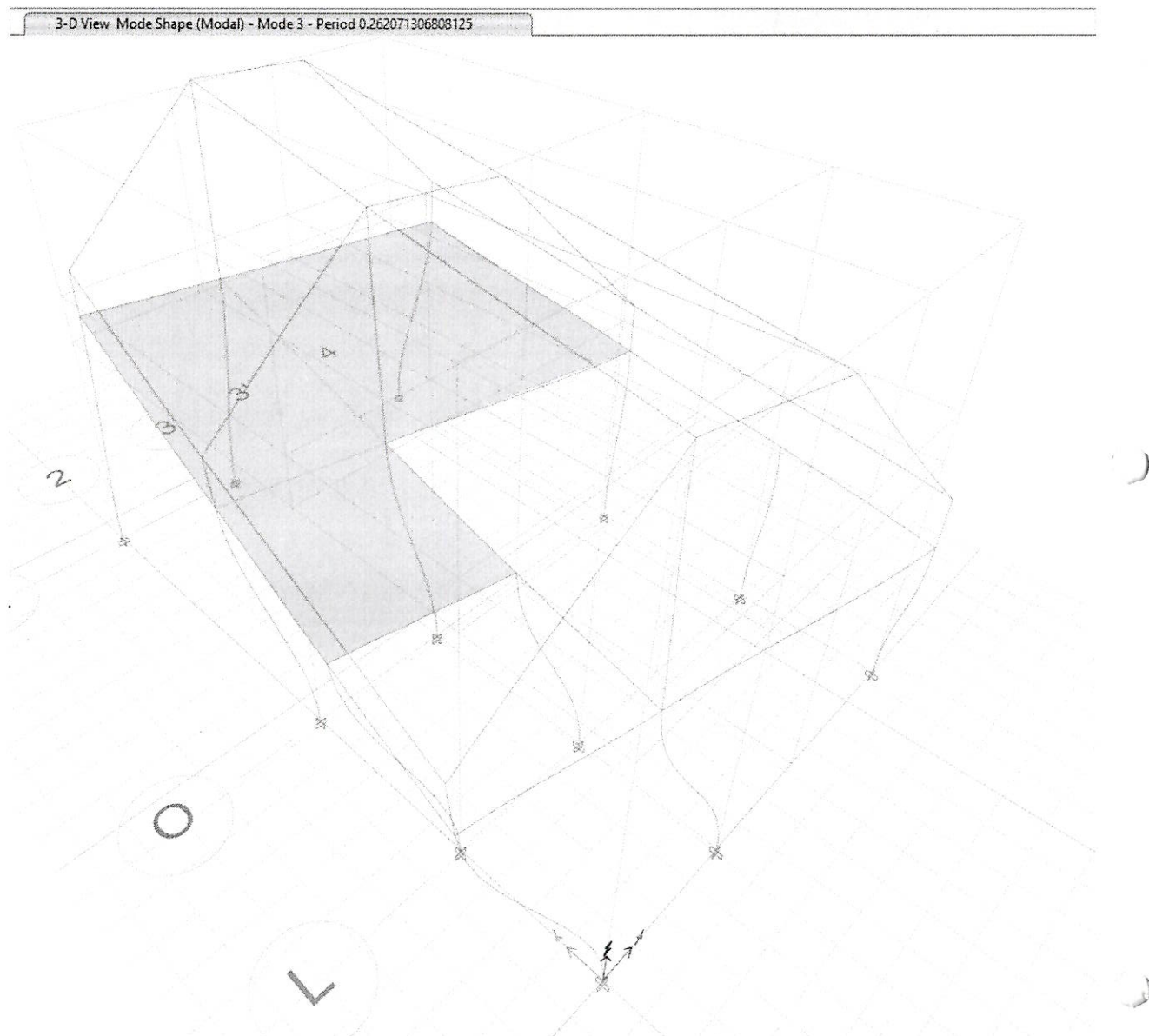


Modul 1 -  $T=0.354s$  -Translatie pe directia X

3-D View: Mode Shape (Modal) - Mode 2 - Period 0.326748556661678



Modul 2 -  $T=0.327s$  -Translatie pe directia Y



Modul 3 – T=0.262s -Torsiune

#### 4. CALCULUL DEPLASĂRII STRUCTURII

DRIFT max directia X = 0.000227

DRIFT max directia Y = 0.000228

**Verificarea la deplasare se face pe baza expresiei:**

$$d_r^{SLS} = v \cdot q \cdot d_{re} \leq d_{r,a}^{SLS}$$

$d_r^{SLS}$  - deplasarea relativa de nivel sub actiunea seismica asociata SLS;

$d_{re}$  - deplasarea relativa de nivel, determinata prin calcul elastic sub incarcari seismice de proiectare;

$v$  - factor de reducere care tine seama de intervalul de recurenta mai redus al actiunii seismice asociat verificarilor pentru SLS;

valoarea factorului este  $v=0.5$ ;

$q$  – factor de comportare specific tipului de structura;

$d_{r,a}^{SLS}$  - valoarea admisibila a deplasarii relative de nivel .

In cazul componentelor nestructurale din materiale fragile atasate structurii

$$d_{r,a}^{SLS} = 0.005h$$

$$\text{Pe directia X: } d_r^{SLS} = v \cdot q \cdot d_{re} = 0.5 \cdot 4 \cdot 0.000227 = 0.000454 \leq d_{r,a}^{SLS}$$

$$\text{Pe directia Y: } d_r^{SLS} = v \cdot q \cdot d_{re} = 0.5 \cdot 4 \cdot 0.000228 = 0.000456 \leq d_{r,a}^{SLS}$$

NIVEL	COMBINATIE	DIRECTIE	DRIFT
E2	GSXP_EP	X	5.00E-05
E2	GSXP_EP	Y	4.00E-05
E2	GSXN_EP	X	6.20E-05
E2	GSXN_EP	Y	6.50E-05
E2	GSXP_EN	X	5.00E-05
E2	GSXP_EN	Y	4.00E-05
E2	GSXN_EN	X	6.20E-05
E2	GSXN_EN	Y	6.50E-05
E2	GSYP_EP	X	5.60E-05
E2	GSYP_EP	Y	3.10E-05
E2	GSYN_EP	X	5.60E-05
E2	GSYN_EP	Y	7.20E-05
E2	GSYP_EN	X	5.60E-05
E2	GSYP_EN	Y	3.10E-05
E2	GSYN_EN	X	5.60E-05
E2	GSYN_EN	Y	7.20E-05
E2	GSXP_EP+03GSYP_EP	X	5.00E-05
E2	GSXP_EP+03GSYP_EP	Y	3.10E-05
E2	GSXP_EP+03GSYN_EP	X	5.00E-05
E2	GSXP_EP+03GSYN_EP	Y	5.00E-05
E2	GSXP_EP+03GSYP_EN	X	5.00E-05
E2	GSXP_EP+03GSYP_EN	Y	3.10E-05
E2	GSXP_EP+03GSYN_EN	X	5.00E-05
E2	GSXP_EP+03GSYN_EN	Y	5.00E-05
E2	GSXN_EP+03GSYP_EP	X	6.20E-05
E2	GSXN_EP+03GSYP_EP	Y	6.00E-05
E2	GSXN_EP+03GSYN_EP	X	6.20E-05
E2	GSXN_EP+03GSYN_EP	Y	6.90E-05
E2	GSXN_EP+03GSYP_EN	X	6.20E-05
E2	GSXN_EP+03GSYP_EN	Y	6.00E-05
E2	GSXN_EP+03GSYN_EN	X	6.20E-05
E2	GSXN_EP+03GSYN_EN	Y	6.90E-05
E2	GSXP_EN+03GSYP_EP	X	5.00E-05
E2	GSXP_EN+03GSYP_EP	Y	3.10E-05
E2	GSXP_EN+03GSYN_EP	X	5.00E-05



**BREVIAR DE CALCUL - REPARATIICAPITALE, CONSOLIDARE, RESTAURARE, EXTINDERE ȘI REFACERE  
ÎMPREJMUIRE LA SEDIUL JUDECĂTORIEI HUȘI**

E2	GSXP_EN+03GSYN_EP	Y	5.00E-05
E2	GSXP_EN+03GSYP_EN	X	5.00E-05
E2	GSXP_EN+03GSYP_EN	Y	3.10E-05
E2	GSXP_EN+03GSYN_EN	X	5.00E-05
E2	GSXP_EN+03GSYN_EN	Y	5.00E-05
E2	GSXN_EN+03GSYP_EP	X	6.20E-05
E2	GSXN_EN+03GSYP_EP	Y	6.00E-05
E2	GSXN_EN+03GSYN_EP	X	6.20E-05
E2	GSXN_EN+03GSYN_EP	Y	6.90E-05
E2	GSXN_EN+03GSYP_EN	X	6.20E-05
E2	GSXN_EN+03GSYP_EN	Y	6.00E-05
E2	GSXN_EN+03GSYN_EN	X	6.20E-05
E2	GSXN_EN+03GSYN_EN	Y	6.90E-05
E2	GSYP_EP+03GSXP_EP	X	5.40E-05
E2	GSYP_EP+03GSXP_EP	Y	2.50E-05
E2	GSYP_EP+03GSXN_EP	X	5.80E-05
E2	GSYP_EP+03GSXN_EP	Y	3.60E-05
E2	GSYP_EP+03GSXP_EN	X	5.40E-05
E2	GSYP_EP+03GSXP_EN	Y	2.50E-05
E2	GSYP_EP+03GSXN_EN	X	5.80E-05
E2	GSYP_EP+03GSXN_EN	Y	3.60E-05
E2	GSYN_EP+03GSXP_EP	X	5.40E-05
E2	GSYN_EP+03GSXP_EP	Y	7.20E-05
E2	GSYN_EP+03GSXN_EP	X	5.80E-05
E2	GSYN_EP+03GSXN_EP	Y	7.20E-05
E2	GSYN_EP+03GSXP_EN	X	5.40E-05
E2	GSYN_EP+03GSXP_EN	Y	7.20E-05
E2	GSYN_EP+03GSXN_EN	X	5.80E-05
E2	GSYN_EP+03GSXN_EN	Y	7.20E-05
E2	GSYP_EN+03GSXP_EP	X	5.40E-05
E2	GSYP_EN+03GSXP_EP	Y	2.50E-05
E2	GSYP_EN+03GSXN_EP	X	5.80E-05
E2	GSYP_EN+03GSXN_EP	Y	3.60E-05
E2	GSYP_EN+03GSXP_EN	X	5.40E-05
E2	GSYP_EN+03GSXP_EN	Y	2.50E-05
E2	GSYP_EN+03GSXN_EN	X	5.80E-05
E2	GSYP_EN+03GSXN_EN	Y	3.60E-05
E2	GSYN_EN+03GSXP_EP	X	5.40E-05
E2	GSYN_EN+03GSXP_EP	Y	7.20E-05
E2	GSYN_EN+03GSXN_EP	X	5.80E-05
E2	GSYN_EN+03GSXN_EP	Y	7.20E-05
E2	GSYN_EN+03GSXP_EN	X	5.40E-05
E2	GSYN_EN+03GSXP_EN	Y	7.20E-05
E2	GSYN_EN+03GSXN_EN	X	5.80E-05
E2	GSYN_EN+03GSXN_EN	Y	7.20E-05



## NOTE DE CALCUL - REALIZARE BLOC ALIMENTAR S+P+E IN CAZARMA 659 CRAIOVA

E1	GSXP_EP	X	0.000112
E1	GSXP_EP	Y	0.00016
E1	GSXN_EP	X	0.000227
E1	GSXN_EP	Y	0.000157
E1	GSXP_EN	X	0.000112
E1	GSXP_EN	Y	0.00016
E1	GSXN_EN	X	0.000227
E1	GSXN_EN	Y	0.000157
E1	GSYP_EP	X	0.00016
E1	GSYP_EP	Y	8.90E-05
E1	GSYN_EP	X	0.000159
E1	GSYN_EP	Y	0.000228
E1	GSYP_EN	X	0.00016
E1	GSYP_EN	Y	8.90E-05
E1	GSYN_EN	X	0.000159
E1	GSYN_EN	Y	0.000228
E1	GSXP_EP+03GSYP_EP	X	0.000112
E1	GSXP_EP+03GSYP_EP	Y	0.000139
E1	GSXP_EP+03GSYN_EP	X	0.000112
E1	GSXP_EP+03GSYN_EP	Y	0.000181
E1	GSXP_EP+03GSYP_EN	X	0.000112
E1	GSXP_EP+03GSYP_EN	Y	0.000139
E1	GSXP_EP+03GSYN_EN	X	0.000112
E1	GSXP_EP+03GSYN_EN	Y	0.000181
E1	GSXN_EP+03GSYP_EP	X	0.000227
E1	GSXN_EP+03GSYP_EP	Y	0.000136
E1	GSXN_EP+03GSYN_EP	X	0.000227
E1	GSXN_EP+03GSYN_EP	Y	0.000178
E1	GSXN_EP+03GSYP_EN	X	0.000227
E1	GSXN_EP+03GSYP_EN	Y	0.000136
E1	GSXN_EP+03GSYN_EN	X	0.000227
E1	GSXN_EP+03GSYN_EN	Y	0.000178
E1	GSXP_EN+03GSYP_EP	X	0.000112
E1	GSXP_EN+03GSYP_EP	Y	0.000139
E1	GSXP_EN+03GSYN_EP	X	0.000112
E1	GSXP_EN+03GSYN_EP	Y	0.000181
E1	GSXP_EN+03GSYP_EN	X	0.000112
E1	GSXP_EN+03GSYP_EN	Y	0.000139
E1	GSXP_EN+03GSYN_EN	X	0.000112
E1	GSXP_EN+03GSYN_EN	Y	0.000181
E1	GSXN_EN+03GSYP_EP	X	0.000227
E1	GSXN_EN+03GSYP_EP	Y	0.000136
E1	GSXN_EN+03GSYN_EP	X	0.000227
E1	GSXN_EN+03GSYN_EP	Y	0.000178
E1	GSXN_EN+03GSYP_EN	X	0.000227
E1	GSXN_EN+03GSYP_EN	Y	0.000136

**BREVIAR DE CALCUL - REPARATIICAPITALE, CONSOLIDARE, RESTAURARE, EXTINDERE ȘI REFACERE  
ÎMPREJMUIRE LA SEDIUL JUDECĂTORIEI HUȘI**

E1	GSXN_EN+03GSYN_EN	X	0.000227
E1	GSXN_EN+03GSYN_EN	Y	0.000178
E1	GSYP_EP+03GSXP_EP	X	0.00014
E1	GSYP_EP+03GSXP_EP	Y	8.90E-05
E1	GSYP_EP+03GSXN_EP	X	0.00018
E1	GSYP_EP+03GSXP_EN	X	0.00014
E1	GSYP_EP+03GSXP_EN	Y	8.90E-05
E1	GSYP_EP+03GSXN_EN	X	0.00018
E1	GSYN_EP+03GSXP_EP	X	0.000139
E1	GSYN_EP+03GSXP_EP	Y	0.000228
E1	GSYN_EP+03GSXN_EP	X	0.00018
E1	GSYN_EP+03GSXN_EP	Y	0.000227
E1	GSYN_EP+03GSXP_EN	X	0.000139
E1	GSYN_EP+03GSXP_EN	Y	0.000228
E1	GSYN_EP+03GSXN_EN	X	0.00018
E1	GSYN_EP+03GSXN_EN	Y	0.000227
E1	GSYP_EN+03GSXP_EP	X	0.00014
E1	GSYP_EN+03GSXP_EP	Y	8.90E-05
E1	GSYP_EN+03GSXN_EP	X	0.00018
E1	GSYP_EN+03GSXP_EN	X	0.00014
E1	GSYP_EN+03GSXP_EN	Y	8.90E-05
E1	GSYP_EN+03GSXN_EN	X	0.00018
E1	GSYN_EN+03GSXP_EP	X	0.000139
E1	GSYN_EN+03GSXP_EP	Y	0.000228
E1	GSYN_EN+03GSXN_EP	X	0.00018
E1	GSYN_EN+03GSXN_EP	Y	0.000227
E1	GSYN_EN+03GSXP_EN	X	0.000139
E1	GSYN_EN+03GSXP_EN	Y	0.000228
E1	GSYN_EN+03GSXN_EN	X	0.00018
E1	GSYN_EN+03GSXN_EN	Y	0.000227
P	GSXP_EP	X	0.000196
P	GSXP_EP	Y	5.30E-05
P	GSXN_EP	X	0.000219
P	GSXN_EP	Y	5.10E-05
P	GSXP_EN	X	0.000196
P	GSXP_EN	Y	5.30E-05
P	GSXN_EN	X	0.000219
P	GSXN_EN	Y	5.10E-05
P	GSYP_EP	Y	0.000145
P	GSYN_EP	Y	0.000212
P	GSYP_EN	Y	0.000145
P	GSYN_EN	Y	0.000212
P	GSXP_EP+03GSYP_EP	X	0.000192
P	GSXP_EP+03GSYN_EP	X	0.0002
P	GSXP_EP+03GSYN_EP	Y	0.000106

## NOTE DE CALCUL - REALIZARE BLOC ALIMENTAR S+P+E IN CAZARMA 659 CRAIOVA

P	GSXP_EP+03GSYP_EN	X	0.000192
P	GSXP_EP+03GSYN_EN	X	0.0002
P	GSXP_EP+03GSYN_EN	Y	0.000106
P	GSXN_EP+03GSYP_EP	X	0.000222
P	GSXN_EP+03GSYN_EP	X	0.000215
P	GSXN_EP+03GSYN_EP	Y	0.0001
P	GSXN_EP+03GSYP_EN	X	0.000222
P	GSXN_EP+03GSYN_EN	X	0.000215
P	GSXN_EP+03GSYN_EN	Y	0.0001
P	GSXP_EN+03GSYP_EP	X	0.000192
P	GSXP_EN+03GSYN_EP	X	0.0002
P	GSXP_EN+03GSYN_EP	Y	0.000106
P	GSXP_EN+03GSYP_EN	X	0.000192
P	GSXP_EN+03GSYN_EN	X	0.0002
P	GSXP_EN+03GSYN_EN	Y	0.000106
P	GSXN_EN+03GSYP_EP	X	0.000222
P	GSXN_EN+03GSYN_EP	X	0.000215
P	GSXN_EN+03GSYN_EP	Y	0.0001
P	GSXN_EN+03GSYP_EN	X	0.000222
P	GSXN_EN+03GSYN_EN	X	0.000215
P	GSXN_EN+03GSYN_EN	Y	0.0001
P	GSYP_EP+03GSXP_EP	X	5.20E-05
P	GSYP_EP+03GSXP_EP	Y	0.00014
P	GSYP_EP+03GSXN_EP	X	8.70E-05
P	GSYP_EP+03GSXN_EP	Y	0.000151
P	GSYP_EP+03GSXP_EN	X	5.20E-05
P	GSYP_EP+03GSXP_EN	Y	0.00014
P	GSYP_EP+03GSXN_EN	X	8.70E-05
P	GSYP_EP+03GSXN_EN	Y	0.000151
P	GSYN_EP+03GSXP_EP	X	6.40E-05
P	GSYN_EP+03GSXP_EP	Y	0.000217
P	GSYN_EP+03GSXN_EP	X	6.60E-05
P	GSYN_EP+03GSXN_EP	Y	0.000206
P	GSYN_EP+03GSXP_EN	X	6.40E-05
P	GSYN_EP+03GSXP_EN	Y	0.000217
P	GSYN_EP+03GSXN_EN	X	6.60E-05
P	GSYN_EP+03GSXN_EN	Y	0.000206
P	GSYP_EN+03GSXP_EP	X	5.20E-05
P	GSYP_EN+03GSXP_EP	Y	0.00014
P	GSYP_EN+03GSXN_EP	X	8.70E-05
P	GSYP_EN+03GSXN_EP	Y	0.000151
P	GSYP_EN+03GSXP_EN	X	5.20E-05
P	GSYP_EN+03GSXP_EN	Y	0.00014
P	GSYP_EN+03GSXN_EN	X	8.70E-05
P	GSYP_EN+03GSXN_EN	Y	0.000151
P	GSYN_EN+03GSXP_EP	X	6.40E-05



**BREVIAR DE CALCUL - REPARATIICAPITALE, CONSOLIDARE, RESTAURARE, EXTINDERE ȘI REFACERE  
ÎMPREJMUIRE LA SEDIUL JUDECĂTORIEI HUȘI**

P	GSYN_EN+03GSXP_EP	Y	0.000217
P	GSYN_EN+03GSXN_EP	X	6.60E-05
P	GSYN_EN+03GSXN_EP	Y	0.000206
P	GSYN_EN+03GSXP_EN	X	6.40E-05
P	GSYN_EN+03GSXP_EN	Y	0.000217
P	GSYN_EN+03GSXN_EN	X	6.60E-05
P	GSYN_EN+03GSXN_EN	Y	0.000206

## **5 EFORTURI IN ELEMENTELE STRUCTURII**

### **5.1 Eforturi in stalpi**

NIVEL	STALP	COMBINATIE INCARCARI	Station	P	V2	V3	M2	M3
E2	C20	GSXP_EP	0	-11.6674	-1.2912	7.4565	12.1292	-2.0519
E2	C20	GSXN_EP	0	-10.7747	-2.0484	7.4648	12.1503	-2.8476
E2	C20	GSXP_EN	0	-11.6674	-1.2912	7.4565	12.1292	-2.0519
E2	C20	GSXN_EN	0	-10.7747	-2.0484	7.4648	12.1503	-2.8476
E2	C20	GSYP_EP	0	-11.3886	-1.6831	7.5315	12.0159	-2.4605
E2	C20	GSYN_EP	0	-11.0535	-1.6565	7.3898	12.2637	-2.4391
E2	C20	GSYP_EN	0	-11.3886	-1.6831	7.5315	12.0159	-2.4605
E2	C20	GSYN_EN	0	-11.0535	-1.6565	7.3898	12.2637	-2.4391
E2	C22	GSXP_EP	0	-20.6163	-1.882	-4.3918	-7.5165	-2.4682
E2	C22	GSXN_EP	0	-19.2368	-2.8359	-4.3962	-7.5258	-3.5218
E2	C22	GSXP_EN	0	-20.6163	-1.882	-4.3918	-7.5165	-2.4682
E2	C22	GSXN_EN	0	-19.2368	-2.8359	-4.3962	-7.5258	-3.5218
E2	C22	GSYP_EP	0	-19.9652	-2.3617	-3.9698	-7.0602	-2.998
E2	C22	GSYN_EP	0	-19.8879	-2.3562	-4.8183	-7.9821	-2.992
E2	C22	GSYP_EN	0	-19.9652	-2.3617	-3.9698	-7.0602	-2.998
E2	C22	GSYN_EN	0	-19.8879	-2.3562	-4.8183	-7.9821	-2.992
E2	C24	GSXP_EP	0	-19.8251	-0.8626	-2.6837	-2.3828	-1.0202
E2	C24	GSXN_EP	0	-18.7891	-1.5646	-2.6597	-2.3375	-1.7813
E2	C24	GSXP_EN	0	-19.8251	-0.8626	-2.6837	-2.3828	-1.0202
E2	C24	GSXN_EN	0	-18.7891	-1.5646	-2.6597	-2.3375	-1.7813
E2	C24	GSYP_EP	0	-19.0973	-1.1994	-2.4508	-2.1909	-1.388
E2	C24	GSYN_EP	0	-19.5169	-1.2278	-2.8926	-2.5293	-1.4134
E2	C24	GSYP_EN	0	-19.0973	-1.1994	-2.4508	-2.1909	-1.388
E2	C24	GSYN_EN	0	-19.5169	-1.2278	-2.8926	-2.5293	-1.4134
E1	C21	GSXP_EP	0	-23.6798	-6.4806	-5.9159	0.6079	-2.1794
E1	C21	GSXN_EP	0	-25.1819	-11.5313	-5.8879	0.692	-3.3068
E1	C21	GSXP_EN	0	-23.6798	-6.4806	-5.9159	0.6079	-2.1794



## NOTE DE CALCUL - REALIZARE BLOC ALIMENTAR S+P+E IN CAZARMA 659 CRAIOVA

E1	C21	GSXN_EN	0	-25.1819	-11.5313	-5.8879	0.692	-3.3068
E1	C21	GSYP_EP	0	-24.202	-8.9904	-3.4775	1.5772	-2.7549
E1	C21	GSYN_EP	0	-24.6598	-9.0215	-8.3264	-0.2773	-2.7314
E1	C21	GSYP_EN	0	-24.202	-8.9904	-3.4775	1.5772	-2.7549
E1	C21	GSYN_EN	0	-24.6598	-9.0215	-8.3264	-0.2773	-2.7314
E1	C1	GSXP_EP	0	-29.8862	-10.2619	20.9568	10.1726	-3.2819
E1	C1	GSXN_EP	0	-31.3923	-15.4181	21.1152	10.3294	-4.2293
E1	C1	GSXP_EN	0	-29.8862	-10.2619	20.9568	10.1726	-3.2819
E1	C1	GSXN_EN	0	-31.3923	-15.4181	21.1152	10.3294	-4.2293
E1	C1	GSYP_EP	0	-30.845	-12.8457	22.8698	10.7102	-3.7317
E1	C1	GSYN_EP	0	-30.4335	-12.8344	19.2022	9.7917	-3.7795
E1	C1	GSYP_EN	0	-30.845	-12.8457	22.8698	10.7102	-3.7317
E1	C1	GSYN_EN	0	-30.4335	-12.8344	19.2022	9.7917	-3.7795
E1	C4	GSXP_EP	0	-32	16.6928	25.5386	13.5233	7.0738
E1	C4	GSXN_EP	0	-31.3918	12.2297	25.3304	13.326	6.7817
E1	C4	GSXP_EN	0	-32	16.6928	25.5386	13.5233	7.0738
E1	C4	GSXN_EN	0	-31.3918	12.2297	25.3304	13.326	6.7817
E1	C4	GSYP_EP	0	-31.892	14.4654	27.2158	13.8454	6.9615
E1	C4	GSYN_EP	0	-31.4998	14.4572	23.6531	13.0039	6.894
E1	C4	GSYP_EN	0	-31.892	14.4654	27.2158	13.8454	6.9615
E1	C4	GSYN_EN	0	-31.4998	14.4572	23.6531	13.0039	6.894
E1	C5	GSXP_EP	0	-44.3486	-15.2068	-15.3468	-8.9656	-5.5761
E1	C5	GSXN_EP	0	-46.3693	-22.9071	-15.4642	-8.9893	-7.534
E1	C5	GSXP_EN	0	-44.3486	-15.2068	-15.3468	-8.9656	-5.5761
E1	C5	GSXN_EN	0	-46.3693	-22.9071	-15.4642	-8.9893	-7.534
E1	C5	GSYP_EP	0	-45.3879	-19.0675	-11.1738	-7.2682	-6.5579
E1	C5	GSYN_EP	0	-45.3299	-19.0464	-19.6372	-10.6867	-6.5522
E1	C5	GSYP_EN	0	-45.3879	-19.0675	-11.1738	-7.2682	-6.5579
E1	C5	GSYN_EN	0	-45.3299	-19.0464	-19.6372	-10.6867	-6.5522
E1	C7	GSXP_EP	0	-51.0826	24.8108	-20.9067	-12.7878	8.6829
E1	C7	GSXN_EP	0	-50.4325	18.167	-20.7493	-12.7385	7.5857
E1	C7	GSXP_EN	0	-51.0826	24.8108	-20.9067	-12.7878	8.6829
E1	C7	GSXN_EN	0	-50.4325	18.167	-20.7493	-12.7385	7.5857
E1	C7	GSYP_EP	0	-50.7671	21.4742	-16.5174	-11.0221	8.1273
E1	C7	GSYN_EP	0	-50.748	21.5036	-25.1386	-14.5042	8.1413
E1	C7	GSYP_EN	0	-50.7671	21.4742	-16.5174	-11.0221	8.1273
E1	C7	GSYN_EN	0	-50.748	21.5036	-25.1386	-14.5042	8.1413
E1	C13	GSXP_EP	0	-28.6457	12.2938	-4.707	1.398	2.7055
E1	C13	GSXN_EP	0	-28.1833	8.0964	-4.7529	1.2626	2.3743
E1	C13	GSXP_EN	0	-28.6457	12.2938	-4.707	1.398	2.7055
E1	C13	GSXN_EN	0	-28.1833	8.0964	-4.7529	1.2626	2.3743
E1	C13	GSYP_EP	0	-28.2066	10.2083	-2.2155	2.2948	2.5252
E1	C13	GSYN_EP	0	-28.6224	10.1819	-7.2443	0.3658	2.5546

**BREVIAR DE CALCUL - REPARATIICAPITALE, CONSOLIDARE, RESTAURARE, EXTINDERE ȘI REFACERE  
ÎMPREJMUIRE LA SEDIUL JUDECĂTORIEI HUȘI**

E1	C13	GSYP_EN	0	-28.2066	10.2083	-2.2155	2.2948	2.5252
E1	C13	GSYN_EN	0	-28.6224	10.1819	-7.2443	0.3658	2.5546
P	C21	GSXP_EP	0	-34.1969	1.2958	-0.3581	-0.5949	2.0586
P	C21	GSXP_EP	3.05	-27.3365	1.2958	-0.3581	0.4996	-1.9006
P	C21	GSXN_EP	0	-40.8292	-1.3857	-0.6137	-1.0042	-2.3059
P	C21	GSXN_EP	3.05	-33.9687	-1.3857	-0.6137	0.8712	1.929
P	C21	GSXP_EN	0	-34.1969	1.2958	-0.3581	-0.5949	2.0586
P	C21	GSXP_EN	3.05	-27.3365	1.2958	-0.3581	0.4996	-1.9006
P	C21	GSXN_EN	0	-40.8292	-1.3857	-0.6137	-1.0042	-2.3059
P	C21	GSXN_EN	3.05	-33.9687	-1.3857	-0.6137	0.8712	1.929
P	C21	GSYP_EP	0	-34.553	0.0324	0.8613	1.4067	0.0007
P	C21	GSYP_EP	3.05	-27.6925	0.0324	0.8613	-1.2253	-0.0977
P	C21	GSYN_EP	0	-40.4731	-0.1223	-1.8331	-3.0058	-0.2479
P	C21	GSYN_EP	3.05	-33.6126	-0.1223	-1.8331	2.5961	0.1261
P	C21	GSYP_EN	0	-34.553	0.0324	0.8613	1.4067	0.0007
P	C21	GSYP_EN	3.05	-27.6925	0.0324	0.8613	-1.2253	-0.0977
P	C21	GSYN_EN	0	-40.4731	-0.1223	-1.8331	-3.0058	-0.2479
P	C21	GSYN_EN	3.05	-33.6126	-0.1223	-1.8331	2.5961	0.1261
P	C1	GSXP_EP	0	-62.3767	1.6953	2.8993	3.1065	2.7045
P	C1	GSXP_EP	3.05	-55.5162	1.6953	2.8993	-5.7398	-2.4835
P	C1	GSXN_EP	0	-69.9278	-1.8374	2.6556	2.7089	-3.03
P	C1	GSXN_EP	3.05	-63.0673	-1.8374	2.6556	-5.3913	2.5945
P	C1	GSXP_EN	0	-62.3767	1.6953	2.8993	3.1065	2.7045
P	C1	GSXP_EN	3.05	-55.5162	1.6953	2.8993	-5.7398	-2.4835
P	C1	GSXN_EN	0	-69.9278	-1.8374	2.6556	2.7089	-3.03
P	C1	GSXN_EN	3.05	-63.0673	-1.8374	2.6556	-5.3913	2.5945
P	C1	GSYP_EP	0	-67.4868	-0.1871	3.9561	4.9228	-0.3488
P	C1	GSYP_EP	3.05	-60.6263	-0.1871	3.9561	-7.1596	0.2247
P	C1	GSYN_EP	0	-64.8176	0.045	1.5988	0.8926	0.0232
P	C1	GSYN_EP	3.05	-57.9572	0.045	1.5988	-3.9715	-0.1137
P	C1	GSYP_EN	0	-67.4868	-0.1871	3.9561	4.9228	-0.3488
P	C1	GSYP_EN	3.05	-60.6263	-0.1871	3.9561	-7.1596	0.2247
P	C1	GSYN_EN	0	-64.8176	0.045	1.5988	0.8926	0.0232
P	C1	GSYN_EN	3.05	-57.9572	0.045	1.5988	-3.9715	-0.1137
P	C2	GSXP_EP	0	-94.5669	0.8681	6.0395	6.6271	1.7689
P	C2	GSXP_EP	3.05	-87.7064	0.8681	6.0395	-11.8071	-0.9008
P	C2	GSXN_EP	0	-90.4961	-3.2857	5.9939	6.5506	-4.6752
P	C2	GSXN_EP	3.05	-83.6356	-3.2857	5.9939	-11.7439	5.38
P	C2	GSXP_EN	0	-94.5669	0.8681	6.0395	6.6271	1.7689
P	C2	GSXP_EN	3.05	-87.7064	0.8681	6.0395	-11.8071	-0.9008
P	C2	GSXN_EN	0	-90.4961	-3.2857	5.9939	6.5506	-4.6752
P	C2	GSXN_EN	3.05	-83.6356	-3.2857	5.9939	-11.7439	5.38
P	C2	GSYP_EP	0	-93.4548	-1.3377	7.286	8.7307	-1.6539



## NOTE DE CALCUL - REALIZARE BLOC ALIMENTAR S+P+E IN CAZARMA 659 CRAIOVA

P	C2	GSYP_EP	3.05	-86.5943	-1.3377	7.286	-13.5262	2.4337
P	C2	GSYN_EP	0	-91.6081	-1.0799	4.7474	4.447	-1.2524
P	C2	GSYN_EP	3.05	-84.7477	-1.0799	4.7474	-10.0248	2.0455
P	C2	GSYP_EN	0	-93.4548	-1.3377	7.286	8.7307	-1.6539
P	C2	GSYP_EN	3.05	-86.5943	-1.3377	7.286	-13.5262	2.4337
P	C2	GSYN_EN	0	-91.6081	-1.0799	4.7474	4.447	-1.2524
P	C2	GSYN_EN	3.05	-84.7477	-1.0799	4.7474	-10.0248	2.0455
P	C4	GSXP_EP	0	-88.7005	2.9376	3.4338	3.5966	4.115
P	C4	GSXP_EP	3.05	-81.84	2.9376	3.4338	-6.8798	-4.8715
P	C4	GSXN_EP	0	-85.2241	-0.3364	3.728	4.0774	-1.3302
P	C4	GSXN_EP	3.05	-78.3637	-0.3364	3.728	-7.3006	-0.2816
P	C4	GSXP_EN	0	-88.7005	2.9376	3.4338	3.5966	4.115
P	C4	GSXP_EN	3.05	-81.84	2.9376	3.4338	-6.8798	-4.8715
P	C4	GSXN_EN	0	-85.2241	-0.3364	3.728	4.0774	-1.3302
P	C4	GSXN_EN	3.05	-78.3637	-0.3364	3.728	-7.3006	-0.2816
P	C4	GSYP_EP	0	-88.109	1.189	4.8758	6.0469	1.2113
P	C4	GSYP_EP	3.05	-81.2485	1.189	4.8758	-8.8509	-2.4156
P	C4	GSYN_EP	0	-85.8156	1.4122	2.2859	1.6271	1.5735
P	C4	GSYN_EP	3.05	-78.9551	1.4122	2.2859	-5.3296	-2.7375
P	C4	GSYP_EN	0	-88.109	1.189	4.8758	6.0469	1.2113
P	C4	GSYP_EN	3.05	-81.2485	1.189	4.8758	-8.8509	-2.4156
P	C4	GSYN_EN	0	-85.8156	1.4122	2.2859	1.6271	1.5735
P	C4	GSYN_EN	3.05	-78.9551	1.4122	2.2859	-5.3296	-2.7375
P	C5	GSXP_EP	0	-98.7634	1.375	-2.0394	-2.4928	2.2435
P	C5	GSXP_EP	3.05	-91.9029	1.375	-2.0394	3.7395	-1.9737
P	C5	GSXN_EP	0	-106.306	-1.5742	-2.328	-2.9417	-2.6051
P	C5	GSXN_EP	3.05	-99.4453	-1.5742	-2.328	4.1751	2.2242
P	C5	GSXP_EN	0	-98.7634	1.375	-2.0394	-2.4928	2.2435
P	C5	GSXP_EN	3.05	-91.9029	1.375	-2.0394	3.7395	-1.9737
P	C5	GSXN_EN	0	-106.306	-1.5742	-2.328	-2.9417	-2.6051
P	C5	GSXN_EN	3.05	-99.4453	-1.5742	-2.328	4.1751	2.2242
P	C5	GSYP_EP	0	-103.137	-0.1025	-0.7367	-0.3951	-0.1858
P	C5	GSYP_EP	3.05	-96.2763	-0.1025	-0.7367	1.8423	0.1291
P	C5	GSYN_EP	0	-101.932	-0.0967	-3.6307	-5.0394	-0.1758
P	C5	GSYN_EP	3.05	-95.0719	-0.0967	-3.6307	6.0723	0.1214
P	C5	GSYP_EN	0	-103.137	-0.1025	-0.7367	-0.3951	-0.1858
P	C5	GSYP_EN	3.05	-96.2763	-0.1025	-0.7367	1.8423	0.1291
P	C5	GSYN_EN	0	-101.932	-0.0967	-3.6307	-5.0394	-0.1758
P	C5	GSYN_EN	3.05	-95.0719	-0.0967	-3.6307	6.0723	0.1214
P	C6	GSXP_EP	0	-130.964	0.8833	-4.4056	-5.2226	1.6875
P	C6	GSXP_EP	3.05	-124.103	0.8833	-4.4056	8.242	-1.0342
P	C6	GSXN_EP	0	-126.729	-2.7264	-4.4734	-5.3244	-3.9152
P	C6	GSXN_EP	3.05	-119.869	-2.7264	-4.4734	8.348	4.4408
P	C6	GSXP_EN	0	-130.964	0.8833	-4.4056	-5.2226	1.6875

**BREVIAR DE CALCUL - REPARATIICAPITALE, CONSOLIDARE, RESTAURARE, EXTINDERE ȘI REFACERE  
ÎMPREJMUIRE LA SEDIUL JUDECĂTORIEI HUȘI**

P	C6	GSXP_EN	3.05	-124.103	0.8833	-4.4056	8.242	-1.0342
P	C6	GSXN_EN	0	-126.729	-2.7264	-4.4734	-5.3244	-3.9152
P	C6	GSXN_EN	3.05	-119.869	-2.7264	-4.4734	8.348	4.4408
P	C6	GSYP_EP	0	-129.396	-0.9256	-2.8643	-2.7817	-1.1202
P	C6	GSYP_EP	3.05	-122.535	-0.9256	-2.8643	5.9512	1.7095
P	C6	GSYN_EP	0	-128.297	-0.9174	-6.0147	-7.7653	-1.1075
P	C6	GSYN_EP	3.05	-121.437	-0.9174	-6.0147	10.6388	1.6971
P	C6	GSYP_EN	0	-129.396	-0.9256	-2.8643	-2.7817	-1.1202
P	C6	GSYP_EN	3.05	-122.535	-0.9256	-2.8643	5.9512	1.7095
P	C6	GSYN_EN	0	-128.297	-0.9174	-6.0147	-7.7653	-1.1075
P	C6	GSYN_EN	3.05	-121.437	-0.9174	-6.0147	10.6388	1.6971
P	C7	GSXP_EP	0	-118.026	2.3987	-3.2096	-3.939	3.4062
P	C7	GSXP_EP	3.05	-111.165	2.3987	-3.2096	5.8724	-3.9408
P	C7	GSXN_EP	0	-114.717	-0.2439	-2.8535	-3.3875	-1.0969
P	C7	GSXN_EP	3.05	-107.856	-0.2439	-2.8535	5.3318	-0.3264
P	C7	GSXP_EN	0	-118.026	2.3987	-3.2096	-3.939	3.4062
P	C7	GSXP_EN	3.05	-111.165	2.3987	-3.2096	5.8724	-3.9408
P	C7	GSXN_EN	0	-114.717	-0.2439	-2.8535	-3.3875	-1.0969
P	C7	GSXN_EN	3.05	-107.856	-0.2439	-2.8535	5.3318	-0.3264
P	C7	GSYP_EP	0	-116.992	1.0733	-1.4486	-1.1243	1.1483
P	C7	GSYP_EP	3.05	-110.132	1.0733	-1.4486	3.2837	-2.1276
P	C7	GSYN_EP	0	-115.75	1.0814	-4.6145	-6.2022	1.1609
P	C7	GSYN_EP	3.05	-108.889	1.0814	-4.6145	7.9206	-2.1397
P	C7	GSYP_EN	0	-116.992	1.0733	-1.4486	-1.1243	1.1483
P	C7	GSYP_EN	3.05	-110.132	1.0733	-1.4486	3.2837	-2.1276
P	C7	GSYN_EN	0	-115.75	1.0814	-4.6145	-6.2022	1.1609
P	C7	GSYN_EN	3.05	-108.889	1.0814	-4.6145	7.9206	-2.1397
P	C10	GSXP_EP	0	-42.4262	1.2805	-0.2224	-0.4789	2.0576
P	C10	GSXP_EP	3.05	-35.5657	1.2805	-0.2224	0.202	-1.8558
P	C10	GSXN_EP	0	-39.0898	-1.9132	-0.2568	-0.5429	-2.8837
P	C10	GSXN_EP	3.05	-32.2293	-1.9132	-0.2568	0.2433	2.9614
P	C10	GSXP_EN	0	-42.4262	1.2805	-0.2224	-0.4789	2.0576
P	C10	GSXP_EN	3.05	-35.5657	1.2805	-0.2224	0.202	-1.8558
P	C10	GSXN_EN	0	-39.0898	-1.9132	-0.2568	-0.5429	-2.8837
P	C10	GSXN_EN	3.05	-32.2293	-1.9132	-0.2568	0.2433	2.9614
P	C10	GSYP_EP	0	-38.1497	-0.2291	1.2089	1.8275	-0.2775
P	C10	GSYP_EP	3.05	-31.2892	-0.2291	1.2089	-1.866	0.4217
P	C10	GSYN_EP	0	-43.3663	-0.4036	-1.6881	-2.8493	-0.5486
P	C10	GSYN_EP	3.05	-36.5058	-0.4036	-1.6881	2.3113	0.6839
P	C10	GSYP_EN	0	-38.1497	-0.2291	1.2089	1.8275	-0.2775
P	C10	GSYP_EN	3.05	-31.2892	-0.2291	1.2089	-1.866	0.4217
P	C10	GSYN_EN	0	-43.3663	-0.4036	-1.6881	-2.8493	-0.5486
P	C10	GSYN_EN	3.05	-36.5058	-0.4036	-1.6881	2.3113	0.6839



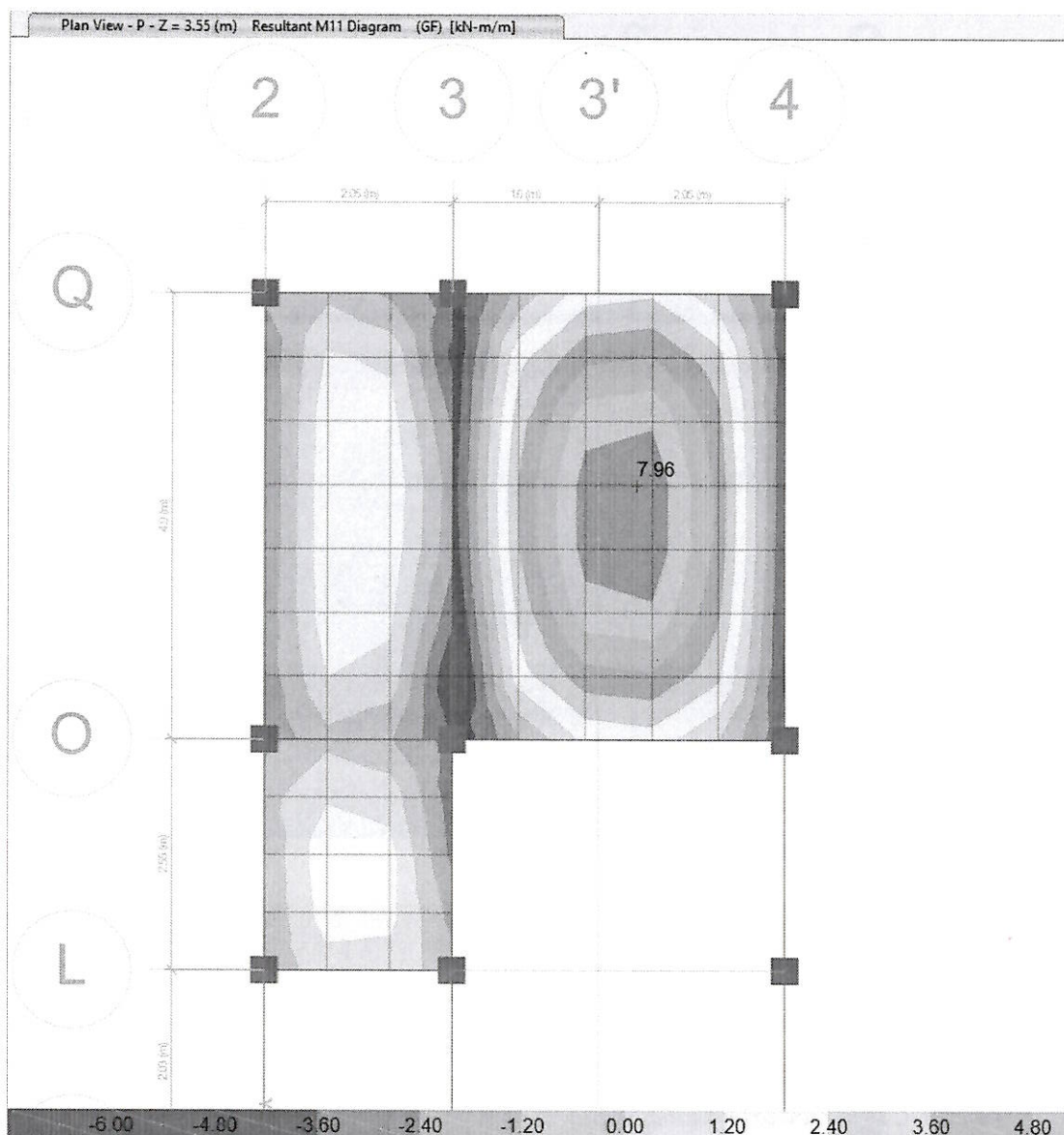
## NOTE DE CALCUL - REALIZARE BLOC ALIMENTAR S+P+E IN CAZARMA 659 CRAIOVA

P	C13	GSXP_EP	0	-45.3149	1.4552	-0.5576	-0.9432	2.2931
P	C13	GSXP_EP	3.05	-38.4544	1.4552	-0.5576	0.7616	-2.1546
P	C13	GSXN_EP	0	-42.0315	-0.9341	-0.2699	-0.4737	-1.7419
P	C13	GSXN_EP	3.05	-35.171	-0.9341	-0.2699	0.3518	1.1161
P	C13	GSXP_EN	0	-45.3149	1.4552	-0.5576	-0.9432	2.2931
P	C13	GSXP_EN	3.05	-38.4544	1.4552	-0.5576	0.7616	-2.1546
P	C13	GSXN_EN	0	-42.0315	-0.9341	-0.2699	-0.4737	-1.7419
P	C13	GSXN_EN	3.05	-35.171	-0.9341	-0.2699	0.3518	1.1161
P	C13	GSYP_EP	0	-40.6942	0.3346	1.0536	1.6934	0.3961
P	C13	GSYP_EP	3.05	-33.8337	0.3346	1.0536	-1.5271	-0.6253
P	C13	GSYN_EP	0	-46.6523	0.1865	-1.8811	-3.1103	0.1552
P	C13	GSYN_EP	3.05	-39.7918	0.1865	-1.8811	2.6405	-0.4133
P	C13	GSYP_EN	0	-40.6942	0.3346	1.0536	1.6934	0.3961
P	C13	GSYP_EN	3.05	-33.8337	0.3346	1.0536	-1.5271	-0.6253
P	C13	GSYN_EN	0	-46.6523	0.1865	-1.8811	-3.1103	0.1552
P	C13	GSYN_EN	3.05	-39.7918	0.1865	-1.8811	2.6405	-0.4133
P	C17	GSXP_EP	0	-25.419	1.0433	-0.6134	-0.8732	1.8099
P	C17	GSXP_EP	3.05	-18.5585	1.0433	-0.6134	0.9993	-1.3773
P	C17	GSXN_EP	0	-31.1095	-1.9108	-0.9088	-1.3288	-2.912
P	C17	GSXN_EP	3.05	-24.2491	-1.9108	-0.9088	1.4458	2.9227
P	C17	GSXP_EN	0	-25.419	1.0433	-0.6134	-0.8732	1.8099
P	C17	GSXP_EN	3.05	-18.5585	1.0433	-0.6134	0.9993	-1.3773
P	C17	GSXN_EN	0	-31.1095	-1.9108	-0.9088	-1.3288	-2.912
P	C17	GSXN_EN	3.05	-24.2491	-1.9108	-0.9088	1.4458	2.9227
P	C17	GSYP_EP	0	-29.25	-0.3781	0.9149	1.4744	-0.4624
P	C17	GSYP_EP	3.05	-22.3895	-0.3781	0.9149	-1.3197	0.6914
P	C17	GSYN_EP	0	-27.2785	-0.4894	-2.4371	-3.6765	-0.6397
P	C17	GSYN_EP	3.05	-20.4181	-0.4894	-2.4371	3.7648	0.854
P	C17	GSYP_EN	0	-29.25	-0.3781	0.9149	1.4744	-0.4624
P	C17	GSYP_EN	3.05	-22.3895	-0.3781	0.9149	-1.3197	0.6914
P	C17	GSYN_EN	0	-27.2785	-0.4894	-2.4371	-3.6765	-0.6397
P	C17	GSYN_EN	3.05	-20.4181	-0.4894	-2.4371	3.7648	0.854
P	C18	GSXP_EP	0	-22.5631	1.8112	-0.408	-0.6826	2.6786
P	C18	GSXP_EP	3.05	-15.7026	1.8112	-0.408	0.5631	-2.8493
P	C18	GSXN_EP	0	-17.0579	-1.2393	-0.4598	-0.766	-2.151
P	C18	GSXN_EP	3.05	-10.1974	-1.2393	-0.4598	0.6378	1.6327
P	C18	GSXP_EN	0	-22.5631	1.8112	-0.408	-0.6826	2.6786
P	C18	GSXP_EN	3.05	-15.7026	1.8112	-0.408	0.5631	-2.8493
P	C18	GSXN_EN	0	-17.0579	-1.2393	-0.4598	-0.766	-2.151
P	C18	GSXN_EN	3.05	-10.1974	-1.2393	-0.4598	0.6378	1.6327
P	C18	GSYP_EP	0	-21.0083	0.3425	1.2667	1.9004	0.3534
P	C18	GSYP_EP	3.05	-14.1479	0.3425	1.2667	-1.9659	-0.6912
P	C18	GSYN_EP	0	-18.6127	0.2295	-2.1346	-3.349	0.1742
P	C18	GSYN_EP	3.05	-11.7522	0.2295	-2.1346	3.1669	-0.5254

**BREVIAR DE CALCUL - REPARATIICAPITALE, CONSOLIDARE, RESTAURARE, EXTINDERE ȘI REFACERE  
ÎMPREJMUIRE LA SEDIUL JUDECĂTORIEI HUȘI**

P	C18	GSYP_EN	0	-21.0083	0.3425	1.2667	1.9004	0.3534
P	C18	GSYP_EN	3.05	-14.1479	0.3425	1.2667	-1.9659	-0.6912
P	C18	GSYN_EN	0	-18.6127	0.2295	-2.1346	-3.349	0.1742
P	C18	GSYN_EN	3.05	-11.7522	0.2295	-2.1346	3.1669	-0.5254
P	C19	GSXP_EP	0	-14.9213	0.7682	-0.5584	-0.9356	1.4543
P	C19	GSXP_EP	3.05	-8.0609	0.7682	-0.5584	0.7687	-0.8909
P	C19	GSXN_EN	0	-14.7207	-0.4251	-0.2136	-0.4009	-1.223
P	C19	GSXN_EN	3.05	-7.8603	-0.4251	-0.2136	0.2512	0.0761
P	C19	GSXP_EN	0	-14.9213	0.7682	-0.5584	-0.9356	1.4543
P	C19	GSXP_EN	3.05	-8.0609	0.7682	-0.5584	0.7687	-0.8909
P	C19	GSXN_EN	0	-14.7207	-0.4251	-0.2136	-0.4009	-1.223
P	C19	GSXN_EN	3.05	-7.8603	-0.4251	-0.2136	0.2512	0.0761
P	C19	GSYP_EP	0	-16.0076	0.1883	1.4385	2.1334	0.1519
P	C19	GSYP_EP	3.05	-9.1471	0.1883	1.4385	-2.2562	-0.4225
P	C19	GSYN_EP	0	-13.6345	0.1548	-2.2106	-3.47	0.0794
P	C19	GSYN_EP	3.05	-6.774	0.1548	-2.2106	3.276	-0.3924
P	C19	GSYP_EN	0	-16.0076	0.1883	1.4385	2.1334	0.1519
P	C19	GSYP_EN	3.05	-9.1471	0.1883	1.4385	-2.2562	-0.4225
P	C19	GSYN_EN	0	-13.6345	0.1548	-2.2106	-3.47	0.0794
P	C19	GSYN_EN	3.05	-6.774	0.1548	-2.2106	3.276	-0.3924

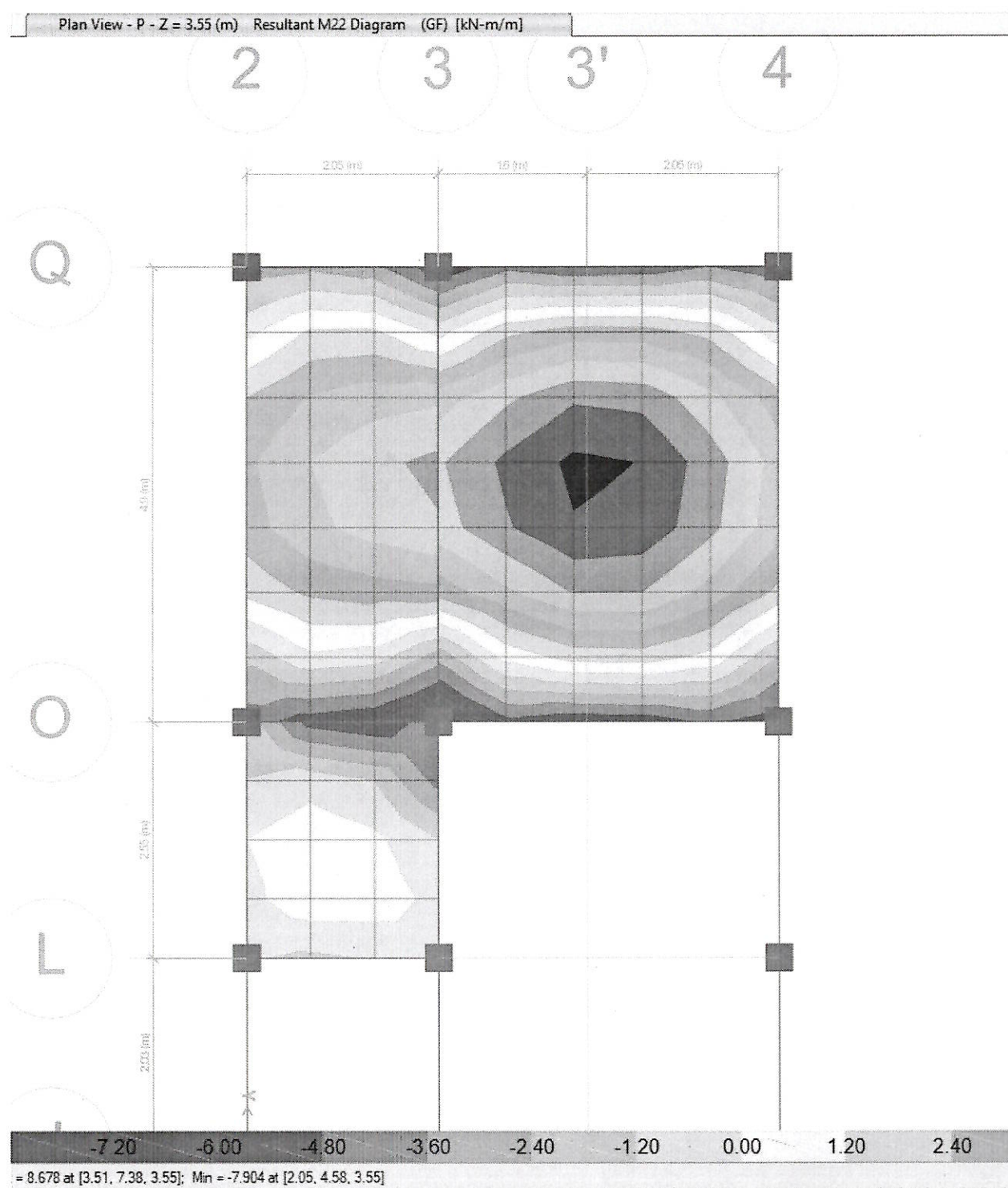
## 5.2 Eforturi placi



DIAGrame MOMENT INCOVOIETOR M11 DIN GRUPAREA FUNDAMENTALA IN PLANSEU



BREVIAR DE CALCUL - REPARATIICAPITALE, CONSOLIDARE, RESTAURARE, EXTINDERE ȘI REFACERE  
ÎMPREJMUIRE LA SEDIUL JUDECĂTORIEI HUȘI



DIAGrame MOMENT INCOVOIETOR M22 DIN GRUPAREA FUNDAMENTALA IN PLANSEU



**5.3 Eforturi in grinzi**

NIVEL	GRINDA	COMBINATIE	Station	V2	V3	M3
			m	kN	kN	kN-m
E2	B17	GF		-12.9654	-23.657	0.8318
E2	B17	GF		-12.9654	-19.259	0.6196
E2	B17	GF		-12.9654	-14.8609	0.4074
E2	B17	GF		-12.9654	-10.4628	0.1951
E2	B17	GF		-12.9654	-6.0648	-0.0171
E2	B17	GF		-12.9654	-1.6667	-0.2294
E2	B17	GF		-12.9654	2.7314	-0.4417
E2	B17	GF		-12.9654	7.1294	-0.6539
E2	B17	GF		-12.9654	11.5275	-0.866
E2	B17	GF		-12.9654	15.9255	-1.0781
E2	B17	GF		-12.9654	20.3236	-1.2901
E2	B17	INF	Max	-4.7181	-9.3293	0.8318
E2	B17	INF	Max	-4.7181	-7.6048	0.6196
E2	B17	INF	Max	-4.7181	-5.8803	0.4074
E2	B17	INF	Max	-4.7181	-4.1558	0.1951
E2	B17	INF	Max	-4.7181	-2.4313	0.0039
E2	B17	INF	Max	-4.7181	-0.571	-0.0786
E2	B17	INF	Max	-4.7181	2.7314	-0.1542
E2	B17	INF	Max	-4.7181	7.1294	-0.2298
E2	B17	INF	Max	-4.7181	11.5275	-0.3055
E2	B17	INF	Max	-4.7181	15.9255	-0.3811
E2	B17	INF	Max	-4.7181	20.3236	-0.4566
E2	B17	INF	Min	-12.9654	-23.657	0.2997
E2	B17	INF	Min	-12.9654	-19.259	0.224
E2	B17	INF	Min	-12.9654	-14.8609	0.1484
E2	B17	INF	Min	-12.9654	-10.4628	0.0728
E2	B17	INF	Min	-12.9654	-6.0648	-0.0171
E2	B17	INF	Min	-12.9654	-1.6667	-0.2294
E2	B17	INF	Min	-12.9654	1.0176	-0.4417
E2	B17	INF	Min	-12.9654	2.7421	-0.6539
E2	B17	INF	Min	-12.9654	4.4666	-0.866
E2	B17	INF	Min	-12.9654	6.1911	-1.0781
E2	B17	INF	Min	-12.9654	7.9156	-1.2901
E2	B23	GF		-22.4291	-7.2459	0.7373
E2	B23	GF		-22.4291	-4.7998	1.4625
E2	B23	GF		-22.4291	-2.3536	2.1874
E2	B23	GF		-22.4291	0.0925	2.9119
E2	B23	INF	Max	-11.1749	-4.06	0.7373
E2	B23	INF	Max	-11.1749	-2.248	1.4625
E2	B23	INF	Max	-11.1749	-0.436	2.1874
E2	B23	INF	Max	-11.1749	1.3759	2.9119
E2	B23	INF	Min	-22.4291	-7.2459	0.1431
E2	B23	INF	Min	-22.4291	-4.7998	0.4987

**BREVIAR DE CALCUL - REPARATIICAPITALE, CONSOLIDARE, RESTAURARE, EXTINDERE ȘI REFACERE  
ÎMPREJMUIRE LA SEDIUL JUDECĂTORIEI HUȘI**

E2	B23	INF	Min	-22.4291	-2.3536	0.7706
E2	B23	INF	Min	-22.4291	0.0925	1.0424
E2	B24	GF		-37.8407	-15.149	0.272
E2	B24	GF		-37.8407	-12.7028	0.0798
E2	B24	GF		-37.8407	-10.2567	-0.1125
E2	B24	GF		-37.8407	-7.8105	-0.3047
E2	B24	INF	Max	-17.2152	-7.9216	0.3201
E2	B24	INF	Max	-17.2152	-6.1097	0.1379
E2	B24	INF	Max	-17.2152	-4.2977	-0.0398
E2	B24	INF	Max	-17.2152	-2.4857	-0.1012
E2	B24	INF	Min	-37.8407	-15.149	0.0491
E2	B24	INF	Min	-37.8407	-12.7028	-0.001
E2	B24	INF	Min	-37.8407	-10.2567	-0.1125
E2	B24	INF	Min	-37.8407	-7.8105	-0.3047
E2	B25	GF		-15.2511	-10.8394	-1.2681
E2	B25	GF		-15.2511	-8.3933	-1.7129
E2	B25	GF		-15.2511	-5.9471	-2.1576
E2	B25	GF		-15.2511	-3.501	-2.602
E2	B25	INF	Max	-8.831	-5.9443	-0.41
E2	B25	INF	Max	-8.831	-4.1323	-0.5826
E2	B25	INF	Max	-8.831	-2.3203	-0.7551
E2	B25	INF	Max	-8.831	-0.5084	-0.9275
E2	B25	INF	Min	-15.2511	-10.8394	-1.2681
E2	B25	INF	Min	-15.2511	-8.3933	-1.7129
E2	B25	INF	Min	-15.2511	-5.9471	-2.1576
E2	B25	INF	Min	-15.2511	-3.501	-2.602
E2	B26	GF		-6.4913	-19.6112	-1.4245
E2	B26	GF		-6.4913	-15.0644	-1.1712
E2	B26	GF		-6.4913	-10.5177	-0.9179
E2	B26	GF		-6.4913	-5.9709	-0.6645
E2	B26	GF		-6.4913	-1.4241	-0.4111
E2	B26	GF		-6.4913	3.1227	-0.1577
E2	B26	GF		-6.4913	7.6695	0.0957
E2	B26	GF		-6.4913	12.2163	0.3492
E2	B26	GF		-6.4913	16.7631	0.6026
E2	B26	GF		-6.4913	21.3099	0.856
E2	B26	INF	Max	-2.377	-7.6119	-0.512
E2	B26	INF	Max	-2.377	-5.8291	-0.4199
E2	B26	INF	Max	-2.377	-4.0463	-0.3278
E2	B26	INF	Max	-2.377	-2.2635	-0.2357
E2	B26	INF	Max	-2.377	-0.4807	-0.1436
E2	B26	INF	Max	-2.377	3.1227	-0.0515
E2	B26	INF	Max	-2.377	7.6695	0.0957
E2	B26	INF	Max	-2.377	12.2163	0.3492
E2	B26	INF	Max	-2.377	16.7631	0.6026



## NOTE DE CALCUL - REALIZARE BLOC ALIMENTAR S+P+E IN CAZARMA 659 CRAIOVA

E2	B26	INF	Max	-2.377	21.3099	0.856
E2	B26	INF	Min	-6.4913	-19.6112	-1.4245
E2	B26	INF	Min	-6.4913	-15.0644	-1.1712
E2	B26	INF	Min	-6.4913	-10.5177	-0.9179
E2	B26	INF	Min	-6.4913	-5.9709	-0.6645
E2	B26	INF	Min	-6.4913	-1.4241	-0.4111
E2	B26	INF	Min	-6.4913	1.1598	-0.1577
E2	B26	INF	Min	-6.4913	3.085	0.0319
E2	B26	INF	Min	-6.4913	4.8678	0.1328
E2	B26	INF	Min	-6.4913	6.6506	0.2249
E2	B26	INF	Min	-6.4913	8.4334	0.317
E2	B45	GF		-4.9692	-26.3398	-0.2767
E2	B45	GF		-4.9692	-21.655	-0.1554
E2	B45	GF		-4.9692	-16.9701	-0.0342
E2	B45	GF		-4.9692	-12.2852	0.0871
E2	B45	GF		-4.9692	-7.6003	0.2083
E2	B45	GF		-4.9692	-2.9154	0.3296
E2	B45	GF		-4.9692	1.7695	0.4508
E2	B45	GF		-4.9692	6.4544	0.572
E2	B45	GF		-4.9692	11.1393	0.6932
E2	B45	GF		-4.9692	15.8242	0.8144
E2	B45	GF		-4.9692	20.5091	0.9356
E2	B45	INF	Max	-1.7888	-10.3503	-0.064
E2	B45	INF	Max	-1.7888	-8.5133	-0.0214
E2	B45	INF	Max	-1.7888	-6.6763	0.0213
E2	B45	INF	Max	-1.7888	-4.8394	0.0871
E2	B45	INF	Max	-1.7888	-3.0024	0.2083
E2	B45	INF	Max	-1.7888	-1.1655	0.3296
E2	B45	INF	Max	-1.7888	1.7695	0.4508
E2	B45	INF	Max	-1.7888	6.4544	0.572
E2	B45	INF	Max	-1.7888	11.1393	0.6932
E2	B45	INF	Max	-1.7888	15.8242	0.8144
E2	B45	INF	Max	-1.7888	20.5091	0.9356
E2	B45	INF	Min	-4.9692	-26.3398	-0.2767
E2	B45	INF	Min	-4.9692	-21.655	-0.1554
E2	B45	INF	Min	-4.9692	-16.9701	-0.0639
E2	B45	INF	Min	-4.9692	-12.2852	0.0127
E2	B45	INF	Min	-4.9692	-7.6003	0.0764
E2	B45	INF	Min	-4.9692	-2.9154	0.1163
E2	B45	INF	Min	-4.9692	0.6715	0.1561
E2	B45	INF	Min	-4.9692	2.5084	0.196
E2	B45	INF	Min	-4.9692	4.3454	0.2358
E2	B45	INF	Min	-4.9692	6.1824	0.2756
E2	B45	INF	Min	-4.9692	8.0193	0.3154
E2	B46	GF		-4.1905	-18.8477	1.0985
E2	B46	GF		-4.1905	-14.4688	0.9472



**BREVIAR DE CALCUL - REPARATIICAPITALE, CONSOLIDARE, RESTAURARE, EXTINDERE ȘI REFACERE  
ÎMPREJMUIRE LA SEDIUL JUDECĂTORIEI HUȘI**

E2	B46	GF		-4.1905	-10.0899	0.7958
E2	B46	GF		-4.1905	-5.7109	0.6445
E2	B46	GF		-4.1905	-1.332	0.4932
E2	B46	GF		-4.1905	3.047	0.3418
E2	B46	GF		-4.1905	7.4259	0.1904
E2	B46	GF		-4.1905	11.8048	0.0391
E2	B46	GF		-4.1905	16.1838	-0.1123
E2	B46	GF		-4.1905	20.5627	-0.2637
E2	B46	GF		-4.1905	24.9417	-0.415
E2	B46	INF	Max	-1.495	-7.3677	1.0985
E2	B46	INF	Max	-1.495	-5.6507	0.9472
E2	B46	INF	Max	-1.495	-3.9337	0.7958
E2	B46	INF	Max	-1.495	-2.2167	0.6445
E2	B46	INF	Max	-1.495	-0.4998	0.4932
E2	B46	INF	Max	-1.495	3.047	0.3418
E2	B46	INF	Max	-1.495	7.4259	0.1904
E2	B46	INF	Max	-1.495	11.8048	0.0533
E2	B46	INF	Max	-1.495	16.1838	-0.0053
E2	B46	INF	Max	-1.495	20.5627	-0.0635
E2	B46	INF	Max	-1.495	24.9417	-0.1217
E2	B46	INF	Min	-4.1905	-18.8477	0.3616
E2	B46	INF	Min	-4.1905	-14.4688	0.3129
E2	B46	INF	Min	-4.1905	-10.0899	0.2643
E2	B46	INF	Min	-4.1905	-5.7109	0.2156
E2	B46	INF	Min	-4.1905	-1.332	0.1669
E2	B46	INF	Min	-4.1905	1.2172	0.1183
E2	B46	INF	Min	-4.1905	2.9342	0.0696
E2	B46	INF	Min	-4.1905	4.6512	-0.0119
E2	B46	INF	Min	-4.1905	6.3682	-0.1123
E2	B46	INF	Min	-4.1905	8.0852	-0.2637
E2	B46	INF	Min	-4.1905	9.8022	-0.415
E1	B5	GF		-41.4031	-16.6148	-0.5831
E1	B5	GF		-41.4031	-13.3808	-0.4072
E1	B5	GF		-41.4031	-10.1468	-0.2311
E1	B5	GF		-41.4031	-6.9127	-0.0549
E1	B5	GF		-41.4031	-3.6787	0.1214
E1	B5	GF		-41.4031	-0.4447	0.2976
E1	B5	GF		-41.4031	2.7893	0.4736
E1	B5	GF		-41.4031	6.0234	0.6494
E1	B5	GF		-41.4031	9.2574	0.8249
E1	B5	GF		-41.4031	12.4914	1
E1	B5	GF		-41.4031	15.7255	1.1747
E1	B5	INF	Max	-14.2206	-4.4526	-0.2075
E1	B5	INF	Max	-14.2206	-3.5904	-0.1449
E1	B5	INF	Max	-14.2206	-2.7281	-0.0823

## NOTE DE CALCUL - REALIZARE BLOC ALIMENTAR S+P+E IN CAZARMA 659 CRAIOVA

E1	B5	INF	Max	-14.2206	-1.8659	-0.0177
E1	B5	INF	Max	-14.2206	-1.0036	0.1214
E1	B5	INF	Max	-14.2206	-0.0565	0.2976
E1	B5	INF	Max	-14.2206	2.7893	0.4736
E1	B5	INF	Max	-14.2206	6.0234	0.6494
E1	B5	INF	Max	-14.2206	9.2574	0.8249
E1	B5	INF	Max	-14.2206	12.4914	1
E1	B5	INF	Max	-14.2206	15.7255	1.1747
E1	B5	INF	Min	-41.4031	-16.6148	-0.5831
E1	B5	INF	Min	-41.4031	-13.3808	-0.4072
E1	B5	INF	Min	-41.4031	-10.1468	-0.2311
E1	B5	INF	Min	-41.4031	-6.9127	-0.0549
E1	B5	INF	Min	-41.4031	-3.6787	0.043
E1	B5	INF	Min	-41.4031	-0.4447	0.1057
E1	B5	INF	Min	-41.4031	0.7208	0.1683
E1	B5	INF	Min	-41.4031	1.5831	0.2308
E1	B5	INF	Min	-41.4031	2.4453	0.2932
E1	B5	INF	Min	-41.4031	3.3076	0.3555
E1	B5	INF	Min	-41.4031	4.1698	0.4176
E1	B13	GF		-35.7648	-16.5967	0.5237
E1	B13	GF		-35.7648	-13.3627	0.3951
E1	B13	GF		-35.7648	-10.1287	0.2662
E1	B13	GF		-35.7648	-6.8946	0.1373
E1	B13	GF		-35.7648	-3.6606	0.0083
E1	B13	GF		-35.7648	-0.4266	-0.1206
E1	B13	GF		-35.7648	2.8075	-0.2496
E1	B13	GF		-35.7648	6.0415	-0.3784
E1	B13	GF		-35.7648	9.2755	-0.5071
E1	B13	GF		-35.7648	12.5096	-0.6355
E1	B13	GF		-35.7648	15.7436	-0.7638
E1	B13	INF	Max	-12.639	-4.4489	0.5237
E1	B13	INF	Max	-12.639	-3.5867	0.3951
E1	B13	INF	Max	-12.639	-2.7244	0.2662
E1	B13	INF	Max	-12.639	-1.8622	0.1373
E1	B13	INF	Max	-12.639	-0.9999	0.0222
E1	B13	INF	Max	-12.639	-0.0541	-0.04
E1	B13	INF	Max	-12.639	2.8075	-0.0851
E1	B13	INF	Max	-12.639	6.0415	-0.1302
E1	B13	INF	Max	-12.639	9.2755	-0.1752
E1	B13	INF	Max	-12.639	12.5096	-0.2202
E1	B13	INF	Max	-12.639	15.7436	-0.2651
E1	B13	INF	Min	-35.7648	-16.5967	0.1856
E1	B13	INF	Min	-35.7648	-13.3627	0.1406
E1	B13	INF	Min	-35.7648	-10.1287	0.0955
E1	B13	INF	Min	-35.7648	-6.8946	0.0503
E1	B13	INF	Min	-35.7648	-3.6606	0.0052



**BREVIAR DE CALCUL - REPARATIICAPITALE, CONSOLIDARE, RESTAURARE, EXTINDERE ȘI REFACERE  
ÎMPREJMUIRE LA SEDIUL JUDECĂTORIEI HUȘI**

E1	B13	INF	Min	-35.7648	-0.4266	-0.1206
E1	B13	INF	Min	-35.7648	0.7246	-0.2496
E1	B13	INF	Min	-35.7648	1.5868	-0.3784
E1	B13	INF	Min	-35.7648	2.4491	-0.5071
E1	B13	INF	Min	-35.7648	3.3113	-0.6355
E1	B13	INF	Min	-35.7648	4.1736	-0.7638
E1	B35	GF		-10.4268	-15.1217	-1.0261
E1	B35	GF		-10.4268	-11.7783	-0.8539
E1	B35	GF		-10.4268	-8.4349	-0.6815
E1	B35	GF		-10.4268	-5.0915	-0.5092
E1	B35	GF		-10.4268	-1.7481	-0.3367
E1	B35	GF		-10.4268	1.5953	-0.1643
E1	B35	GF		-10.4268	4.9387	0.0082
E1	B35	GF		-10.4268	8.2821	0.1807
E1	B35	GF		-10.4268	11.6255	0.3532
E1	B35	GF		-10.4268	14.9689	0.5256
E1	B35	INF	Max	-2.7114	-4.0772	-0.3584
E1	B35	INF	Max	-2.7114	-3.1858	-0.2982
E1	B35	INF	Max	-2.7114	-2.2944	-0.2378
E1	B35	INF	Max	-2.7114	-1.403	-0.1775
E1	B35	INF	Max	-2.7114	-0.5116	-0.1171
E1	B35	INF	Max	-2.7114	1.5953	-0.0568
E1	B35	INF	Max	-2.7114	4.9387	0.0082
E1	B35	INF	Max	-2.7114	8.2821	0.1807
E1	B35	INF	Max	-2.7114	11.6255	0.3532
E1	B35	INF	Max	-2.7114	14.9689	0.5256
E1	B35	INF	Min	-10.4268	-15.1217	-1.0261
E1	B35	INF	Min	-10.4268	-11.7783	-0.8539
E1	B35	INF	Min	-10.4268	-8.4349	-0.6815
E1	B35	INF	Min	-10.4268	-5.0915	-0.5092
E1	B35	INF	Min	-10.4268	-1.7481	-0.3367
E1	B35	INF	Min	-10.4268	0.3798	-0.1643
E1	B35	INF	Min	-10.4268	1.2712	-0.0165
E1	B35	INF	Min	-10.4268	2.1626	0.0587
E1	B35	INF	Min	-10.4268	3.054	0.1244
E1	B35	INF	Min	-10.4268	3.9454	0.1847
E1	B37	GF		-7.706	-15.1323	1.3252
E1	B37	GF		-7.706	-11.7889	1.0955
E1	B37	GF		-7.706	-8.4455	0.8656
E1	B37	GF		-7.706	-5.1021	0.6357
E1	B37	GF		-7.706	-1.7587	0.4058
E1	B37	GF		-7.706	1.5847	0.1758
E1	B37	GF		-7.706	4.9281	-0.0542
E1	B37	GF		-7.706	8.2715	-0.2841
E1	B37	GF		-7.706	11.6149	-0.5141



## NOTE DE CALCUL - REALIZARE BLOC ALIMENTAR S+P+E IN CAZARMA 659 CRAIOVA

E1	B37	GF		-7.706	14.9583	-0.744
E1	B37	INF	Max	-1.7315	-4.0841	1.3252
E1	B37	INF	Max	-1.7315	-3.1927	1.0955
E1	B37	INF	Max	-1.7315	-2.3013	0.8656
E1	B37	INF	Max	-1.7315	-1.4099	0.6357
E1	B37	INF	Max	-1.7315	-0.5185	0.4058
E1	B37	INF	Max	-1.7315	1.5847	0.1758
E1	B37	INF	Max	-1.7315	4.9281	-0.0123
E1	B37	INF	Max	-1.7315	8.2715	-0.1019
E1	B37	INF	Max	-1.7315	11.6149	-0.1835
E1	B37	INF	Max	-1.7315	14.9583	-0.2651
E1	B37	INF	Min	-7.706	-15.1323	0.4694
E1	B37	INF	Min	-7.706	-11.7889	0.3879
E1	B37	INF	Min	-7.706	-8.4455	0.3063
E1	B37	INF	Min	-7.706	-5.1021	0.2247
E1	B37	INF	Min	-7.706	-1.7587	0.143
E1	B37	INF	Min	-7.706	0.3729	0.0614
E1	B37	INF	Min	-7.706	1.2643	-0.0542
E1	B37	INF	Min	-7.706	2.1557	-0.2841
E1	B37	INF	Min	-7.706	3.0471	-0.5141
E1	B37	INF	Min	-7.706	3.9385	-0.744
P	B3	GF		0	-7.6833	0
P	B3	GF		0	-3.4064	0
P	B3	GF		0	3.3178	0
P	B3	GF		0	10.0421	0
P	B3	GF		0	14.319	0
P	B3	INF	Max	0	-1.9051	0
P	B3	INF	Max	0	1.0013	0
P	B3	INF	Max	0	5.41	0
P	B3	INF	Max	0	10.0421	0
P	B3	INF	Max	0	14.319	0
P	B3	INF	Min	0	-8.1443	0
P	B3	INF	Min	0	-5.2379	0
P	B3	INF	Min	0	-0.8292	0
P	B3	INF	Min	0	3.5795	0
P	B3	INF	Min	0	6.4172	0
P	B4	GF		0	-31.1878	0
P	B4	GF		0	-26.3837	0
P	B4	GF		0	-18.6512	0
P	B4	GF		0	-7.9903	0
P	B4	GF		0	4.8669	0
P	B4	GF		0	15.5277	0
P	B4	GF		0	23.2602	0
P	B4	GF		0	28.0643	0
P	B4	INF	Max	0	-13.1359	0
P	B4	INF	Max	0	-10.6434	0

**BREVIAR DE CALCUL - REPARATII CAPITALE, CONSOLIDARE, RESTAURARE, EXTINDERE ȘI REFACERE  
ÎMPREJMUIRE LA SEDIUL JUDECĂTORIEI HUȘI**

P	B4	INF	Max	0	-7.2922	0
P	B4	INF	Max	0	-3.0825	0
P	B4	INF	Max	0	4.8669	0
P	B4	INF	Max	0	15.5277	0
P	B4	INF	Max	0	23.2602	0
P	B4	INF	Max	0	28.0643	0
P	B4	INF	Min	0	-31.1878	0
P	B4	INF	Min	0	-26.3837	0
P	B4	INF	Min	0	-18.6512	0
P	B4	INF	Min	0	-7.9903	0
P	B4	INF	Min	0	1.5824	0
P	B4	INF	Min	0	5.981	0
P	B4	INF	Min	0	9.3322	0
P	B4	INF	Min	0	11.8247	0
P	B5	GF		0	-49.9552	0
P	B5	GF		0	-45.3922	0
P	B5	GF		0	-38.1236	0
P	B5	GF		0	-28.1495	0
P	B5	GF		0	-15.6439	0
P	B5	GF		0	-2.582	0
P	B5	GF		0	10.4799	0
P	B5	GF		0	22.9855	0
P	B5	GF		0	32.9596	0
P	B5	GF		0	40.2281	0
P	B5	GF		0	44.7912	0
P	B5	INF	Max	0	-20.133	0
P	B5	INF	Max	0	-17.7532	0
P	B5	INF	Max	0	-14.5802	0
P	B5	INF	Max	0	-10.6138	0
P	B5	INF	Max	0	-5.9053	0
P	B5	INF	Max	0	-0.6612	0
P	B5	INF	Max	0	10.4799	0
P	B5	INF	Max	0	22.9855	0
P	B5	INF	Max	0	32.9596	0
P	B5	INF	Max	0	40.2281	0
P	B5	INF	Max	0	44.7912	0
P	B5	INF	Min	0	-49.9552	0
P	B5	INF	Min	0	-45.3922	0
P	B5	INF	Min	0	-38.1236	0
P	B5	INF	Min	0	-28.1495	0
P	B5	INF	Min	0	-15.6439	0
P	B5	INF	Min	0	-2.764	0
P	B5	INF	Min	0	3.8381	0
P	B5	INF	Min	0	8.5467	0
P	B5	INF	Min	0	12.513	0

## NOTE DE CALCUL - REALIZARE BLOC ALIMENTAR S+P+E IN CAZARMA 659 CRAIOVA

P	B5	INF	Min	0	15.686	0
P	B5	INF	Min	0	18.0658	0
P	B6	GF		9.2408	-2.3939	0.302
P	B6	GF		9.2408	-0.1164	0.1808
P	B6	GF		9.2408	2.161	0.0597
P	B6	GF		9.2408	4.4385	-0.0615
P	B6	GF		9.2408	6.7159	-0.1827
P	B6	GF		9.2408	8.9934	-0.3039
P	B6	INF	Max	9.2408	-0.0113	0.5381
P	B6	INF	Max	9.2408	1.6757	0.3359
P	B6	INF	Max	9.2408	3.3627	0.1395
P	B6	INF	Max	9.2408	5.0497	0.0083
P	B6	INF	Max	9.2408	6.7367	0.0632
P	B6	INF	Max	9.2408	8.9934	0.1181
P	B6	INF	Min	2.2357	-3.4432	-0.1565
P	B6	INF	Min	2.2357	-1.7562	-0.1016
P	B6	INF	Min	2.2357	-0.0692	-0.0523
P	B6	INF	Min	2.2357	1.6178	-0.0684
P	B6	INF	Min	2.2357	3.3048	-0.2705
P	B6	INF	Min	2.2357	4.9918	-0.4727
P	B7	GF		9.877	-0.9763	0.4497
P	B7	GF		9.877	1.2126	0.4264
P	B7	GF		9.877	3.4015	0.4031
P	B7	GF		9.877	5.5904	0.3799
P	B7	GF		9.877	7.7793	0.3567
P	B7	INF	Max	9.877	1.4955	0.4497
P	B7	INF	Max	9.877	3.1169	0.4264
P	B7	INF	Max	9.877	4.7383	0.4031
P	B7	INF	Max	9.877	6.3597	0.4073
P	B7	INF	Max	9.877	7.9811	0.5474
P	B7	INF	Min	2.4898	-4.2494	-0.0331
P	B7	INF	Min	2.4898	-2.628	0.1085
P	B7	INF	Min	2.4898	-1.0066	0.1417
P	B7	INF	Min	2.4898	0.6148	0.0263
P	B7	INF	Min	2.4898	2.2362	-0.107
P	B9	GF		15.8351	-9.0192	0.5249
P	B9	GF		15.8351	-6.5971	0.3119
P	B9	GF		15.8351	-4.1751	0.0989
P	B9	GF		15.8351	-1.753	-0.1141
P	B9	GF		15.8351	0.669	-0.3271
P	B9	GF		15.8351	3.0911	-0.5401
P	B9	GF		15.8351	5.5132	-0.7532
P	B9	GF		15.8351	7.9352	-0.9664
P	B9	INF	Max	15.8351	-5.352	0.5249
P	B9	INF	Max	15.8351	-3.5579	0.3119
P	B9	INF	Max	15.8351	-1.7638	0.0989



**BREVIAR DE CALCUL - REPARATIICAPITALE, CONSOLIDARE, RESTAURARE, EXTINDERE ȘI REFACERE  
ÎMPREJMUIRE LA SEDIUL JUDECĂTORIEI HUȘI**

P	B9	INF	Max	15.8351	0.0303	-0.0453
P	B9	INF	Max	15.8351	1.8244	-0.1153
P	B9	INF	Max	15.8351	3.6185	-0.1834
P	B9	INF	Max	15.8351	5.5132	-0.25
P	B9	INF	Max	15.8351	7.9352	-0.3144
P	B9	INF	Min	8.7956	-9.0192	0.1359
P	B9	INF	Min	8.7956	-6.5971	0.0716
P	B9	INF	Min	8.7956	-4.3841	0.0073
P	B9	INF	Min	8.7956	-2.5899	-0.1141
P	B9	INF	Min	8.7956	-0.7958	-0.3271
P	B9	INF	Min	8.7956	0.9983	-0.5401
P	B9	INF	Min	8.7956	2.7924	-0.7532
P	B9	INF	Min	8.7956	4.5865	-0.9664
P	B10	GF		14.1246	-5.2048	-0.8981
P	B10	GF		14.1246	-2.9906	-0.5179
P	B10	GF		14.1246	-0.7764	-0.1378
P	B10	GF		14.1246	1.4378	0.2423
P	B10	GF		14.1246	3.652	0.6225
P	B10	INF	Max	14.1246	-1.0821	-0.2681
P	B10	INF	Max	14.1246	0.5581	-0.1613
P	B10	INF	Max	14.1246	2.1982	-0.0544
P	B10	INF	Max	14.1246	3.8384	0.2423
P	B10	INF	Max	14.1246	5.4785	0.6225
P	B10	INF	Min	8.0472	-5.9687	-0.8981
P	B10	INF	Min	8.0472	-4.3285	-0.5179
P	B10	INF	Min	8.0472	-2.6884	-0.1378
P	B10	INF	Min	8.0472	-1.0482	0.0524
P	B10	INF	Min	8.0472	0.5919	0.1592
P	B11	GF		11.3883	-1.2642	-0.2487
P	B11	GF		11.3883	0.9247	-0.2067
P	B11	GF		11.3883	3.1136	-0.1647
P	B11	GF		11.3883	5.3024	-0.1227
P	B11	GF		11.3883	7.4913	-0.0807
P	B11	INF	Max	11.3883	1.0983	0.0618
P	B11	INF	Max	11.3883	2.7197	-0.0366
P	B11	INF	Max	11.3883	4.3411	-0.0481
P	B11	INF	Max	11.3883	5.9625	0.08
P	B11	INF	Max	11.3883	7.5839	0.2081
P	B11	INF	Min	2.9798	-4.2417	-0.3044
P	B11	INF	Min	2.9798	-2.6203	-0.2067
P	B11	INF	Min	2.9798	-0.9989	-0.1647
P	B11	INF	Min	2.9798	0.6225	-0.2335
P	B11	INF	Min	2.9798	2.2439	-0.332
P	B12	GF		0	-12.7398	0
P	B12	GF		0	-8.3047	0

## NOTE DE CALCUL - REALIZARE BLOC ALIMENTAR S+P+E IN CAZARMA 659 CRAIOVA

P	B12	GF		0	-1.2844	0
P	B12	GF		0	6.8906	0
P	B12	GF		0	13.9108	0
P	B12	GF		0	18.3459	0
P	B12	INF	Max	0	-6.0164	0
P	B12	INF	Max	0	-3.4902	0
P	B12	INF	Max	0	1.1082	0
P	B12	INF	Max	0	6.8906	0
P	B12	INF	Max	0	13.9108	0
P	B12	INF	Max	0	18.3459	0
P	B12	INF	Min	0	-12.7398	0
P	B12	INF	Min	0	-8.3047	0
P	B12	INF	Min	0	-2.0515	0
P	B12	INF	Min	0	2.797	0
P	B12	INF	Min	0	5.8746	0
P	B12	INF	Min	0	8.1943	0
P	B13	GF		0	-39.6055	0
P	B13	GF		0	-35.0424	0
P	B13	GF		0	-27.7868	0
P	B13	GF		0	-19.4301	0
P	B13	GF		0	-11.0735	0
P	B13	GF		0	-2.7168	0
P	B13	GF		0	5.6398	0
P	B13	GF		0	13.9965	0
P	B13	GF		0	22.3532	0
P	B13	GF		0	29.6088	0
P	B13	GF		0	34.1719	0
P	B13	INF	Max	0	-17.1327	0
P	B13	INF	Max	0	-14.7529	0
P	B13	INF	Max	0	-11.5836	0
P	B13	INF	Max	0	-8.0915	0
P	B13	INF	Max	0	-4.5994	0
P	B13	INF	Max	0	-0.8136	0
P	B13	INF	Max	0	5.6398	0
P	B13	INF	Max	0	13.9965	0
P	B13	INF	Max	0	22.3532	0
P	B13	INF	Max	0	29.6088	0
P	B13	INF	Max	0	34.1719	0
P	B13	INF	Min	0	-39.6055	0
P	B13	INF	Min	0	-35.0424	0
P	B13	INF	Min	0	-27.7868	0
P	B13	INF	Min	0	-19.4301	0
P	B13	INF	Min	0	-11.0735	0
P	B13	INF	Min	0	-2.7764	0
P	B13	INF	Min	0	2.3847	0
P	B13	INF	Min	0	5.8768	0

**BREVIAR DE CALCUL - REPARATII CAPITALE, CONSOLIDARE, RESTAURARE, EXTINDERE ȘI REFACERE  
ÎMPREJMUIRE LA SEDIUL JUDECĂTORIEI HUȘI**

P	B13	INF	Min	0	9.3689	0
P	B13	INF	Min	0	12.5382	0
P	B13	INF	Min	0	14.918	0
P	B15	GF		0	-16.7747	0
P	B15	GF		0	-10.435	0
P	B15	GF		0	0.7993	0
P	B15	GF		0	12.0336	0
P	B15	GF		0	18.3733	0
P	B15	INF	Max	0	-6.9663	0
P	B15	INF	Max	0	-3.4398	0
P	B15	INF	Max	0	3.7375	0
P	B15	INF	Max	0	12.0336	0
P	B15	INF	Max	0	18.3733	0
P	B15	INF	Min	0	-16.7747	0
P	B15	INF	Min	0	-10.435	0
P	B15	INF	Min	0	-1.9879	0
P	B15	INF	Min	0	4.4531	0
P	B15	INF	Min	0	7.3029	0
P	B16	GF		0	-30.8541	0
P	B16	GF		0	-26.05	0
P	B16	GF		0	-18.3175	0
P	B16	GF		0	-7.6566	0
P	B16	GF		0	5.2005	0
P	B16	GF		0	15.8614	0
P	B16	GF		0	23.5939	0
P	B16	GF		0	28.398	0
P	B16	INF	Max	0	-12.9722	0
P	B16	INF	Max	0	-10.4796	0
P	B16	INF	Max	0	-7.1285	0
P	B16	INF	Max	0	-2.9187	0
P	B16	INF	Max	0	5.2005	0
P	B16	INF	Max	0	15.8614	0
P	B16	INF	Max	0	23.5939	0
P	B16	INF	Max	0	28.398	0
P	B16	INF	Min	0	-30.8541	0
P	B16	INF	Min	0	-26.05	0
P	B16	INF	Min	0	-18.3175	0
P	B16	INF	Min	0	-7.6566	0
P	B16	INF	Min	0	1.817	0
P	B16	INF	Min	0	6.1448	0
P	B16	INF	Min	0	9.4959	0
P	B16	INF	Min	0	11.9884	0
P	B17	GF		0	-77.1333	0
P	B17	GF		0	-70.3353	0
P	B17	GF		0	-58.1391	0



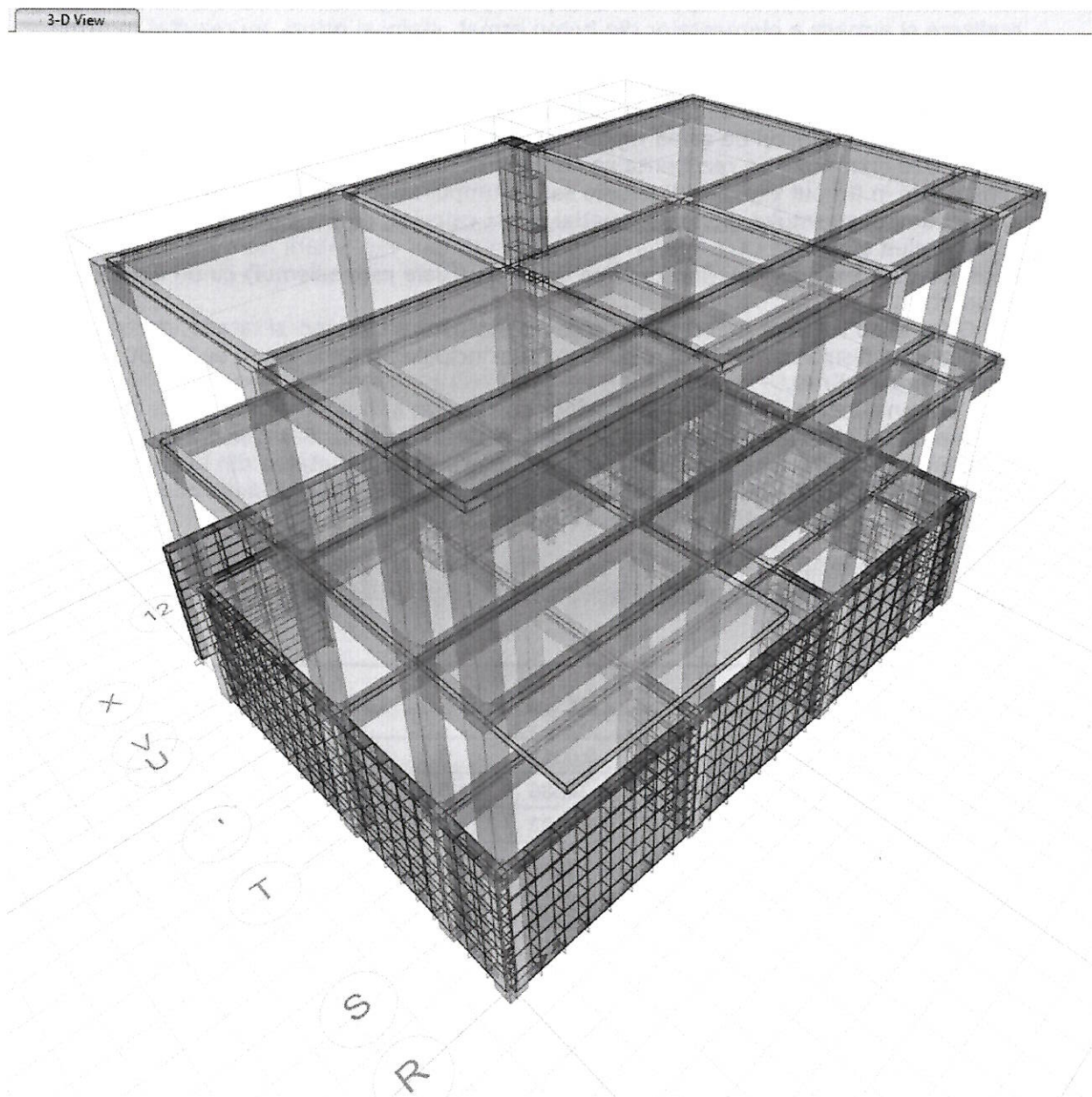
## NOTE DE CALCUL - REALIZARE BLOC ALIMENTAR S+P+E IN CAZARMA 659 CRAIOVA

P	B17	GF		0	-42.1364	0
P	B17	GF		0	-23.6023	0
P	B17	GF		0	-4.5117	0
P	B17	GF		0	14.5788	0
P	B17	GF		0	33.1129	0
P	B17	GF		0	49.1156	0
P	B17	GF		0	61.3118	0
P	B17	GF		0	68.1098	0
P	B17	INF	Max	0	-28.145	0
P	B17	INF	Max	0	-25.1099	0
P	B17	INF	Max	0	-20.492	0
P	B17	INF	Max	0	-14.7581	0
P	B17	INF	Max	0	-8.2819	0
P	B17	INF	Max	0	-1.6426	0
P	B17	INF	Max	0	14.5788	0
P	B17	INF	Max	0	33.1129	0
P	B17	INF	Max	0	49.1156	0
P	B17	INF	Max	0	61.3118	0
P	B17	INF	Max	0	68.1098	0
P	B17	INF	Min	0	-77.1333	0
P	B17	INF	Min	0	-70.3353	0
P	B17	INF	Min	0	-58.1391	0
P	B17	INF	Min	0	-42.1364	0
P	B17	INF	Min	0	-23.6023	0
P	B17	INF	Min	0	-4.5117	0
P	B17	INF	Min	0	4.9967	0
P	B17	INF	Min	0	11.4728	0
P	B17	INF	Min	0	17.2067	0
P	B17	INF	Min	0	21.8246	0
P	B17	INF	Min	0	24.8597	0
P	B19	GF		0	-1.6769	0
P	B19	GF		0	2.7582	0
P	B19	GF		0	9.7785	0
P	B19	GF		0	17.9535	0
P	B19	GF		0	24.9737	0
P	B19	GF		0	29.4088	0
P	B19	INF	Max	0	-0.0424	0
P	B19	INF	Max	0	2.9691	0
P	B19	INF	Max	0	9.7785	0
P	B19	INF	Max	0	17.9535	0
P	B19	INF	Max	0	24.9737	0
P	B19	INF	Max	0	29.4088	0
P	B19	INF	Min	0	-2.7744	0
P	B19	INF	Min	0	-0.3666	0
P	B19	INF	Min	0	2.711	0
P	B19	INF	Min	0	6.1272	0

**BREVIAR DE CALCUL - REPARATII CAPITALE, CONSOLIDARE, RESTAURARE, EXTINDERE ȘI REFACERE  
ÎMPREJMUIRE LA SEDIUL JUDECĂTORIEI HUȘI**

P	B19	INF	Min	0	9.2048	0
P	B19	INF	Min	0	11.5244	0
P	B20	GF		5.8715	-5.4395	-0.0585
P	B20	GF		5.8715	-3.2506	-0.0419
P	B20	GF		5.8715	-1.0617	-0.0253
P	B20	GF		5.8715	1.1272	-0.0087
P	B20	GF		5.8715	3.3161	0.0079
P	B20	INF	Max	5.8715	-1.3191	0.2147
P	B20	INF	Max	5.8715	0.3023	0.0911
P	B20	INF	Max	5.8715	1.9237	0.0077
P	B20	INF	Max	5.8715	3.5451	0.1601
P	B20	INF	Max	5.8715	5.1665	0.3132
P	B20	INF	Min	1.7947	-6.2177	-0.2993
P	B20	INF	Min	1.7947	-4.5963	-0.1462
P	B20	INF	Min	1.7947	-2.9749	-0.0333
P	B20	INF	Min	1.7947	-1.3535	-0.1562
P	B20	INF	Min	1.7947	0.2678	-0.2798
P	B21	GF		0	-10.7	0
P	B21	GF		0	-6.423	0
P	B21	GF		0	0.3012	0
P	B21	GF		0	7.0255	0
P	B21	GF		0	11.3024	0
P	B21	INF	Max	0	-4.2257	0
P	B21	INF	Max	0	-1.3194	0
P	B21	INF	Max	0	3.0894	0
P	B21	INF	Max	0	7.4981	0
P	B21	INF	Max	0	11.3024	0
P	B21	INF	Min	0	-10.7	0
P	B21	INF	Min	0	-7.0819	0
P	B21	INF	Min	0	-2.6731	0
P	B21	INF	Min	0	1.7356	0
P	B21	INF	Min	0	4.642	0

## TRONSON IV – CORP TRIBUNAL EXTINDERE



### 1. DESCRIEREA CONSTRUCTIILOR

Tronsonul IV (Corp tribunal extindere) este o constructie cu regim de inaltime S+P+1E, cu structura de rezistenta in cadre din beton armat. Tronsonul IV comunica cu tronsonul I (corp tribunal) prin corpul de legatura (tronson II). Corpul de legatura se va executa cu rost seismic fata de corpul de legatura.

**Infrastructura** constructiei este alcatuita dintr-un subsol general conceput ca o cutie rigida din beton armat, cu pereti pe contur din beton armat cu grosimea de 25 cm si planseu peste subsol cu grosimea de 20 cm. Planseul peste subsol a fost conceput ca o diafragma rigida. Toate elementele infrastructurii se vor realiza cu beton armat de clasa C25/30, impermeabil P8/10. Sistemul de fundare este de tipul grinzilor continue armate amplasate pe cele doua directii principale avand latimea de 60 cm si adancimea de 60 cm. Cota inferioara a talpilor de



## BREVIAR DE CALCUL - REPARATIICAPITALE, CONSOLIDARE, RESTAURARE, EXTINDERE ȘI REFACERE ÎMPREJMUIRE LA SEDIUL JUDECĂTORIEI HUȘI

fundatii se afla la -4.80 m fata de cota +0.00 a constructiei. Inaltimea libera a subsolului este de 2.95m.

**Suprastructura** tronsonului IV este realizata dintr-un sistem spatial format din cadre din beton armat dispuse dupa 2 directii principale ortogonale. Dimensiunile si modul de realizare si armare a elementelor din beton armat, stalpi si grinzi, au rezultat in urma dimensionarii structurii in conformitate cu normele, standardele si normativele in vigoare.

Placa peste parter si etaj 1 este din beton armat cu grosimea de 15 cm si a fost conceputa si dimensionata astfel incat sa asigure pe de o parte o izolare fonica corespunzatoare, pe de alta parte sa asigure efectul de saiba rigida, indeformabila in planul ei si capabila sa oblige elementele orizontale de rezistenta sa conlucreze in preluare fortelor care pot aparea in constructie in timpul exploatarei uzuale sau in timpul unor miscari orizontale cum ar fi cele care apar in timpul seismului. Sistemul spatial a fost calculat, dimensionat si conceput astfel incat sa poata prelua eforturile care apar in structura in timpul exploatarei normale sau pe durata actiunii unor incarcari exceptionale(in Romania cea mai uzuala este seismul) cu un anumit grad de siguranta.

Grinzile au rol de a prelua incarcările de exploatare din placi si fatade, dar si rol seismic, acestea fiind disipatoare de energie. Grinzile principale au dimensiuni de 30x50 cm realizate din beton armat C25/30.

Dimensiunile geometrice ale stalpilor au rezultat in functie de nivelul de incarcare cu forta axiala atat din gruparea fundamentala cat si din cea speciala. S-a calculat dimensiunea stalpului astfel incat zona comprimata din stalp sa nu depaseasca jumatatea din inaltimea lui activa, conditie de ductilitate ce a dictat dimensiunea sa finala. Sectiunile stalpilor au rezultat 40x40cm.

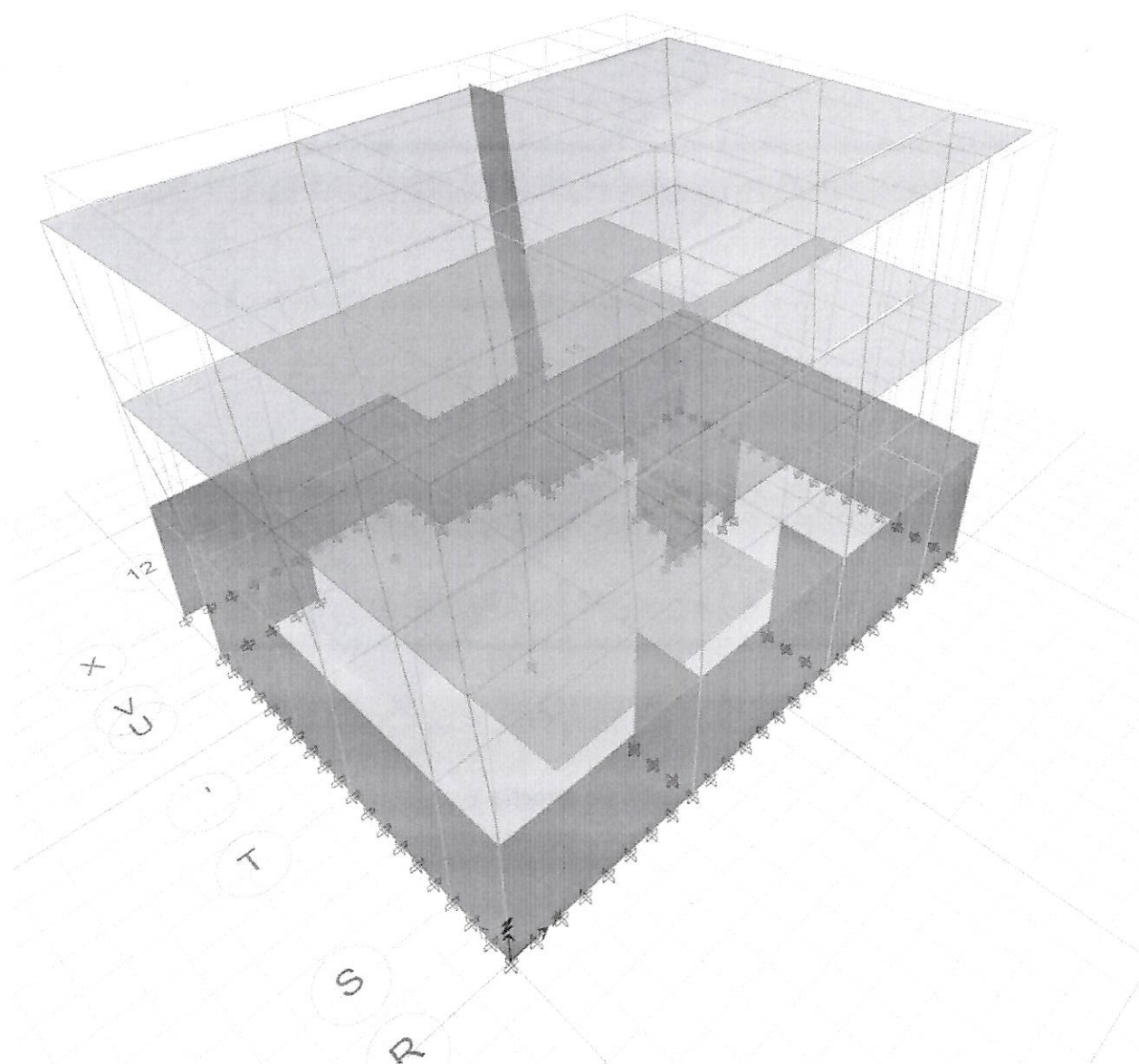
Acoperisul este de tip terasa necirculabila.

### 2. REZULTATE ANALIZA MODALA

MODUL	PERIOADA	UX	UY	UZ	RX	RY	RZ
	sec						
1	0.44	0.5617	0.0013	0	0.0021	0.6285	0.0256
2	0.396	0.0007	0.586	0	0.6638	0.0007	0.0039
3	0.361	0.0348	0.002	0	0.0054	0.033	0.5704

### 3. CARACTERISTICI DINAMICE

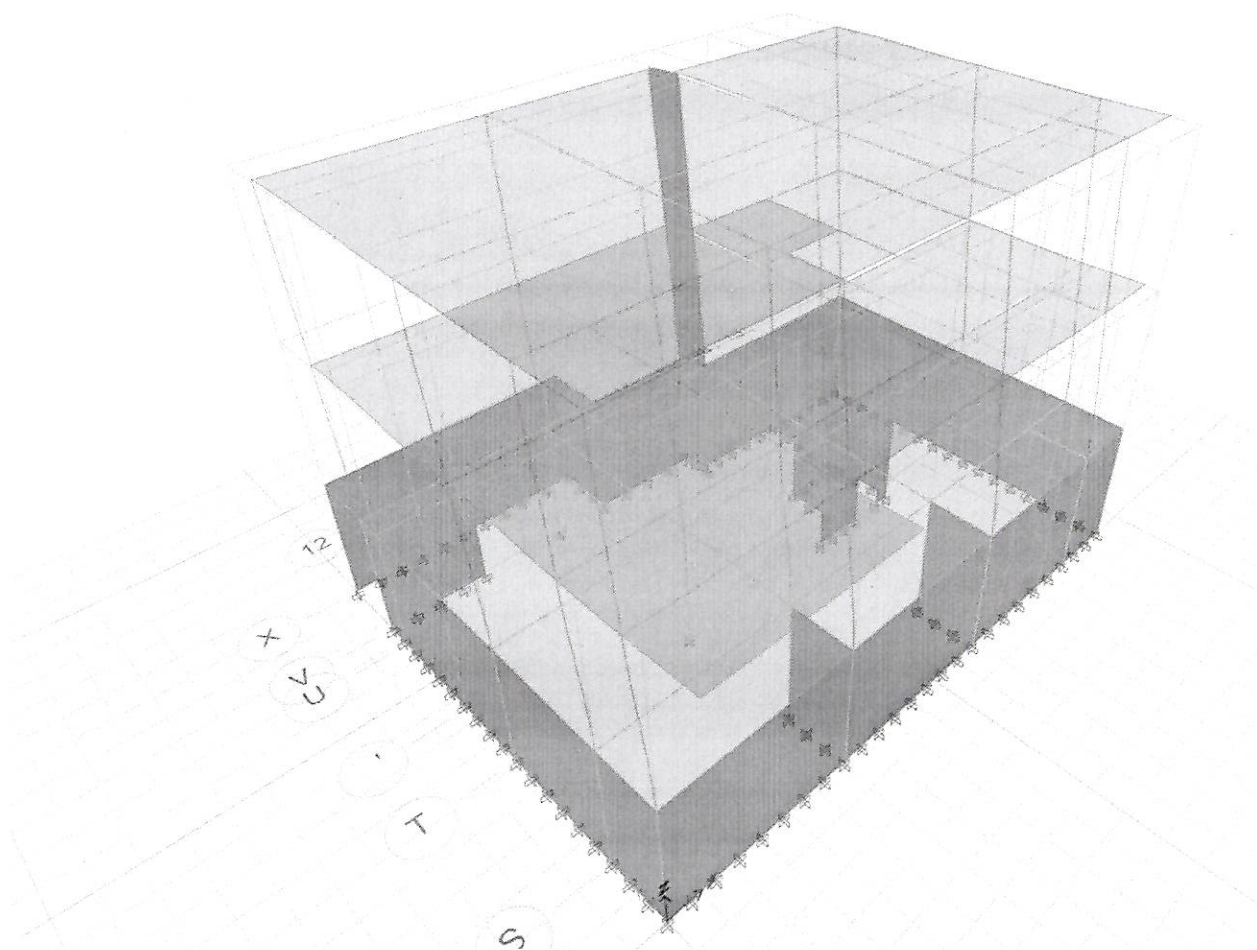
3-D View Mode Shape (Modal) - Mode 1 - Period 0.440242845446162



Modul 1 -  $T=0.44s$  -Translatie pe directia X

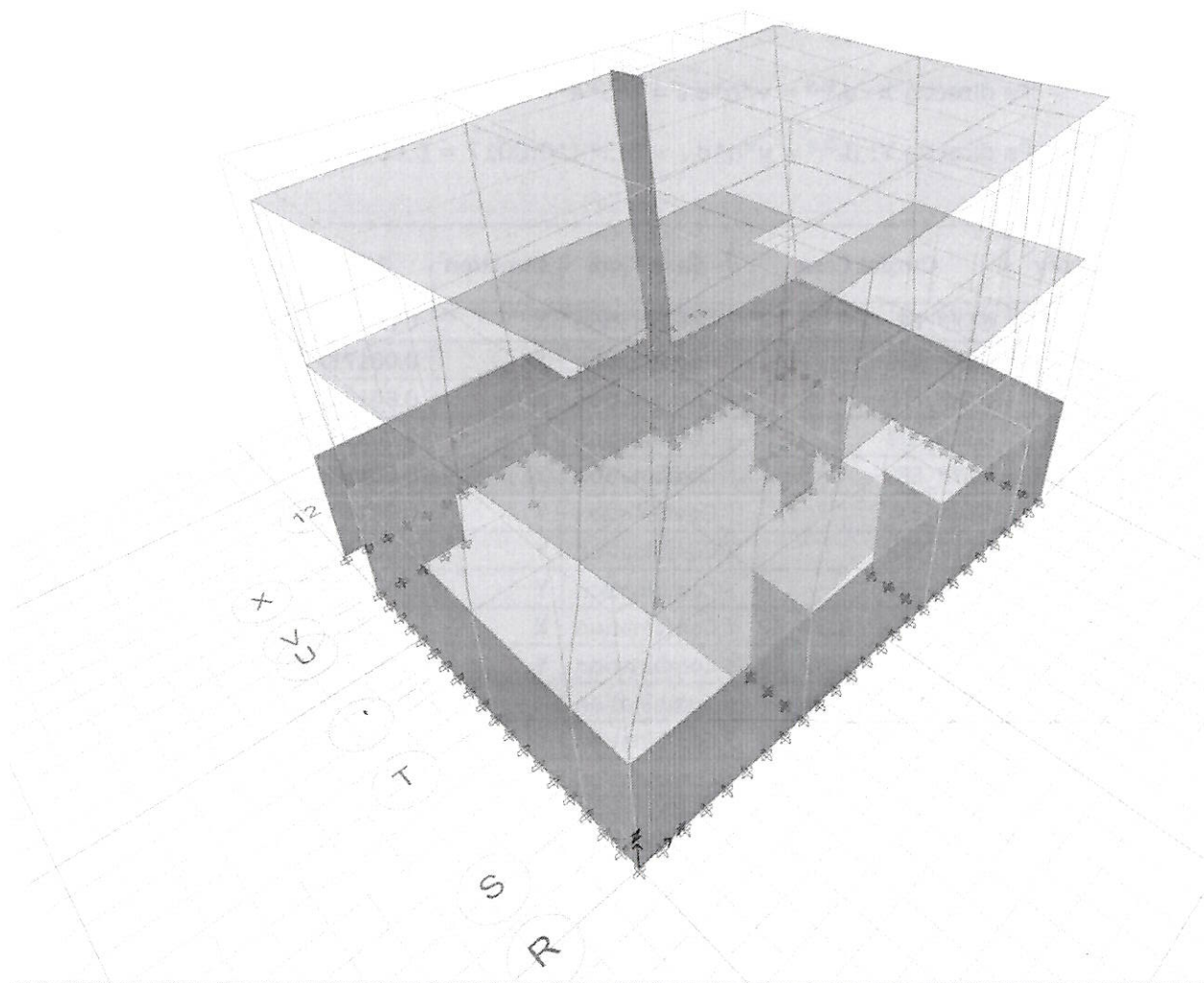
BREVIAR DE CALCUL - REPARATII CAPITALE, CONSOLIDARE, RESTAURARE, EXTINDERE ȘI REFACERE  
ÎMPREJMUIRE LA SEDIUL JUDECĂTORIEI HUȘI

3-D View Mode Shape (Modal) - Mode 2 - Period 0.395635966261048



Modul 2 –  $T=0.396s$  -Translatie pe directia Y





Modul 3 - T=0.361s -Torsiune

#### 4. CALCULUL DEPLASARII STRUCTURII

DRIFT max directia X = 0.002038

DRIFT max directia Y = 0.0017

**Verificarea la deplasare se face pe baza expresiei:**

$$d_r^{SLS} = v \cdot q \cdot d_{re} \leq d_{r,a}^{SLS}$$

$d_r^{SLS}$  - deplasarea relativa de nivel sub actiunea seismica asociata SLS;

$d_{re}$  - deplasarea relativa de nivel, determinata prin calcul elastic sub incarcari seismice de proiectare;

$v$  - factor de reducere care tine seama de intervalul de recurenta mai redus al actiunii seismice asociat verificarilor pentru SLS;

valoarea factorului este  $v=0.5$ ;

$q$  - factor de comportare specific tipului de structura;

$d_{r,a}^{SLS}$  - valoarea admisibila a deplasarii relative de nivel .

**BREVIAR DE CALCUL - REPARATII CAPITALE, CONSOLIDARE, RESTAURARE, EXTINDERE ȘI REFACERE  
ÎMPREJMUIRE LA SEDIUL JUDECĂTORIEI HUȘI**

In cazul componentelor nestructurale din materiale fragile atasate structurii  
 $d_{r,a}^{SLS} = 0.005h$

Pe directia X:  $d_r^{SLS} = v \cdot q \cdot d_{re} = 0.5 \cdot 4 \cdot 0.002038 = 0.004076 \leq d_{r,a}^{SLS}$

Pe directia Y:  $d_r^{SLS} = v \cdot q \cdot d_{re} = 0.5 \cdot 4 \cdot 0.0017 = 0.0034 \leq d_{r,a}^{SLS}$

Story	Output Case	Case Type	Direction	Drift
ETAJ1	GSXP_EP	Combination	X	0.001671
ETAJ1	GSXN_EP	Combination	X	0.001712
ETAJ1	GSXP_EN	Combination	X	0.001498
ETAJ1	GSXN_EN	Combination	X	0.001539
ETAJ1	GSYP_EP	Combination	Y	0.001576
ETAJ1	GSYN_EP	Combination	Y	0.001497
ETAJ1	GSYP_EN	Combination	Y	0.001381
ETAJ1	GSYN_EN	Combination	Y	0.001423
ETAJ1	GSXP_EP+03GSYP_EP	Combination	X	0.00161
ETAJ1	GSXP_EP+03GSYP_EP	Combination	Y	0.000549
ETAJ1	GSXP_EP+03GSYN_EP	Combination	X	0.001733
ETAJ1	GSXP_EP+03GSYN_EP	Combination	Y	0.000742
ETAJ1	GSXP_EP+03GSYP_EN	Combination	X	0.001687
ETAJ1	GSXP_EP+03GSYP_EN	Combination	Y	0.000634
ETAJ1	GSXP_EP+03GSYN_EN	Combination	X	0.001656
ETAJ1	GSXP_EP+03GSYN_EN	Combination	Y	0.000647
ETAJ1	GSXN_EP+03GSYP_EP	Combination	X	0.001773
ETAJ1	GSXN_EP+03GSYP_EP	Combination	Y	0.00082
ETAJ1	GSXN_EP+03GSYN_EP	Combination	X	0.00165
ETAJ1	GSXN_EP+03GSYN_EP	Combination	Y	0.000591
ETAJ1	GSXN_EP+03GSYP_EN	Combination	X	0.001696
ETAJ1	GSXN_EP+03GSYP_EN	Combination	Y	0.000725
ETAJ1	GSXN_EP+03GSYN_EN	Combination	X	0.001727
ETAJ1	GSXN_EP+03GSYN_EN	Combination	Y	0.000676
ETAJ1	GSXP_EN+03GSYP_EP	Combination	X	0.001462
ETAJ1	GSXP_EN+03GSYP_EP	Combination	Y	0.000398
ETAJ1	GSXP_EN+03GSYN_EP	Combination	X	0.00156
ETAJ1	GSXP_EN+03GSYN_EP	Combination	Y	0.000526
ETAJ1	GSXP_EN+03GSYP_EN	Combination	X	0.001514
ETAJ1	GSXP_EN+03GSYP_EN	Combination	Y	0.000442
ETAJ1	GSXP_EN+03GSYN_EN	Combination	X	0.001483
ETAJ1	GSXP_EN+03GSYN_EN	Combination	Y	0.000431
ETAJ1	GSXN_EN+03GSYP_EP	Combination	X	0.0016
ETAJ1	GSXN_EN+03GSYP_EP	Combination	Y	0.000605
ETAJ1	GSXN_EN+03GSYN_EP	Combination	X	0.001478
ETAJ1	GSXN_EN+03GSYN_EP	Combination	Y	0.0004



## NOTE DE CALCUL - REALIZARE BLOC ALIMENTAR S+P+E IN CAZARMA 659 CRAIOVA

ETAJ1	GSXN_EN+03GSYP_EN	Combination	X	0.001523
ETAJ1	GSXN_EN+03GSYP_EN	Combination	Y	0.00051
ETAJ1	GSXN_EN+03GSYN_EN	Combination	X	0.001554
ETAJ1	GSXN_EN+03GSYN_EN	Combination	Y	0.000484
ETAJ1	GSYP_EP+03GSXP_EP	Combination	X	0.000496
ETAJ1	GSYP_EP+03GSXP_EP	Combination	Y	0.001481
ETAJ1	GSYP_EP+03GSXN_EP	Combination	X	0.000731
ETAJ1	GSYP_EP+03GSXN_EP	Combination	Y	0.001672
ETAJ1	GSYP_EP+03GSXP_EN	Combination	X	0.000528
ETAJ1	GSYP_EP+03GSXP_EN	Combination	Y	0.001545
ETAJ1	GSYP_EP+03GSXN_EN	Combination	X	0.000679
ETAJ1	GSYP_EP+03GSXN_EN	Combination	Y	0.001607
ETAJ1	GSYN_EP+03GSXP_EP	Combination	X	0.000691
ETAJ1	GSYN_EP+03GSXP_EP	Combination	Y	0.001592
ETAJ1	GSYN_EP+03GSXN_EP	Combination	X	0.000454
ETAJ1	GSYN_EP+03GSXN_EP	Combination	Y	0.001401
ETAJ1	GSYN_EP+03GSXP_EN	Combination	X	0.000639
ETAJ1	GSYN_EP+03GSXP_EN	Combination	Y	0.001527
ETAJ1	GSYN_EP+03GSXN_EN	Combination	X	0.000486
ETAJ1	GSYN_EP+03GSXN_EN	Combination	Y	0.001466
ETAJ1	GSYP_EN+03GSXP_EP	Combination	X	0.000538
ETAJ1	GSYP_EN+03GSXP_EP	Combination	Y	0.001451
ETAJ1	GSYP_EN+03GSXN_EP	Combination	X	0.000478
ETAJ1	GSYP_EN+03GSXN_EP	Combination	Y	0.001356
ETAJ1	GSYP_EN+03GSXP_EN	Combination	X	0.000486
ETAJ1	GSYP_EN+03GSXP_EN	Combination	Y	0.001394
ETAJ1	GSYP_EN+03GSXN_EN	Combination	X	0.000478
ETAJ1	GSYP_EN+03GSXN_EN	Combination	Y	0.001368
ETAJ1	GSYN_EN+03GSXP_EP	Combination	X	0.000488
ETAJ1	GSYN_EN+03GSXP_EP	Combination	Y	0.001353
ETAJ1	GSYN_EN+03GSXN_EP	Combination	X	0.000578
ETAJ1	GSYN_EN+03GSXN_EP	Combination	Y	0.001493
ETAJ1	GSYN_EN+03GSXP_EN	Combination	X	0.00052
ETAJ1	GSYN_EN+03GSXP_EN	Combination	Y	0.00141
ETAJ1	GSYN_EN+03GSXN_EN	Combination	X	0.000526
ETAJ1	GSYN_EN+03GSXN_EN	Combination	Y	0.001436
PARTER	GSXP_EP	Combination	X	0.00196
PARTER	GSXN_EP	Combination	X	0.001985
PARTER	GSXP_EN	Combination	X	0.001764
PARTER	GSXN_EN	Combination	X	0.001773
PARTER	GSYP_EP	Combination	Y	0.001531
PARTER	GSYN_EP	Combination	Y	0.001471
PARTER	GSYP_EN	Combination	Y	0.001599
PARTER	GSYN_EN	Combination	Y	0.001625
PARTER	GSXP_EP+03GSYP_EP	Combination	X	0.001923
PARTER	GSXP_EP+03GSYP_EP	Combination	Y	0.00061



**BREVIAR DE CALCUL - REPARATIICAPITALE, CONSOLIDARE, RESTAURARE, EXTINDERE ȘI REFACERE  
ÎMPREJMUIRE LA SEDIUL JUDECĂTORIEI HUȘI**

PARTER	GSXP_EP+03GSYN_EP	Combination	X	0.001998
PARTER	GSXP_EP+03GSYN_EP	Combination	Y	0.000718
PARTER	GSXP_EP+03GSYP_EN	Combination	X	0.002013
PARTER	GSXP_EP+03GSYP_EN	Combination	Y	0.00072
PARTER	GSXP_EP+03GSYN_EN	Combination	X	0.001908
PARTER	GSXP_EP+03GSYN_EN	Combination	Y	0.00061
PARTER	GSXN_EP+03GSYP_EP	Combination	X	0.002022
PARTER	GSXN_EP+03GSYP_EP	Combination	Y	0.000766
PARTER	GSXN_EP+03GSYN_EP	Combination	X	0.001948
PARTER	GSXN_EP+03GSYN_EP	Combination	Y	0.000637
PARTER	GSXN_EP+03GSYP_EN	Combination	X	0.001932
PARTER	GSXN_EP+03GSYP_EN	Combination	Y	0.000656
PARTER	GSXN_EP+03GSYN_EN	Combination	X	0.002038
PARTER	GSXN_EP+03GSYN_EN	Combination	Y	0.000746
PARTER	GSXP_EN+03GSYP_EP	Combination	X	0.001779
PARTER	GSXP_EN+03GSYP_EP	Combination	Y	0.000454
PARTER	GSXP_EN+03GSYN_EP	Combination	X	0.001786
PARTER	GSXP_EN+03GSYN_EP	Combination	Y	0.000462
PARTER	GSXP_EN+03GSYP_EN	Combination	X	0.001801
PARTER	GSXP_EN+03GSYP_EN	Combination	Y	0.000461
PARTER	GSXP_EN+03GSYN_EN	Combination	X	0.00181
PARTER	GSXP_EN+03GSYN_EN	Combination	Y	0.000506
PARTER	GSXN_EN+03GSYP_EP	Combination	X	0.00181
PARTER	GSXN_EN+03GSYP_EP	Combination	Y	0.000508
PARTER	GSXN_EN+03GSYN_EP	Combination	X	0.001745
PARTER	GSXN_EN+03GSYN_EP	Combination	Y	0.000394
PARTER	GSXN_EN+03GSYP_EN	Combination	X	0.001775
PARTER	GSXN_EN+03GSYP_EN	Combination	Y	0.000479
PARTER	GSXN_EN+03GSYN_EN	Combination	X	0.001826
PARTER	GSXN_EN+03GSYN_EN	Combination	Y	0.000488
PARTER	GSYP_EP+03GSXP_EP	Combination	X	0.000548
PARTER	GSYP_EP+03GSXP_EP	Combination	Y	0.001445
PARTER	GSYP_EP+03GSXN_EP	Combination	X	0.000729
PARTER	GSYP_EP+03GSXN_EP	Combination	Y	0.001617
PARTER	GSYP_EP+03GSXP_EN	Combination	X	0.000591
PARTER	GSYP_EP+03GSXP_EN	Combination	Y	0.001523
PARTER	GSYP_EP+03GSXN_EN	Combination	X	0.000665
PARTER	GSYP_EP+03GSXN_EN	Combination	Y	0.001539
PARTER	GSYN_EP+03GSXP_EP	Combination	X	0.000704
PARTER	GSYN_EP+03GSXP_EP	Combination	Y	0.001559
PARTER	GSYN_EP+03GSXN_EP	Combination	X	0.000514
PARTER	GSYN_EP+03GSXN_EP	Combination	Y	0.001385
PARTER	GSYN_EP+03GSXP_EN	Combination	X	0.00064
PARTER	GSYN_EP+03GSXP_EN	Combination	Y	0.001482
PARTER	GSYN_EP+03GSXN_EN	Combination	X	0.000557

## NOTE DE CALCUL - REALIZARE BLOC ALIMENTAR S+P+E IN CAZARMA 659 CRAIOVA

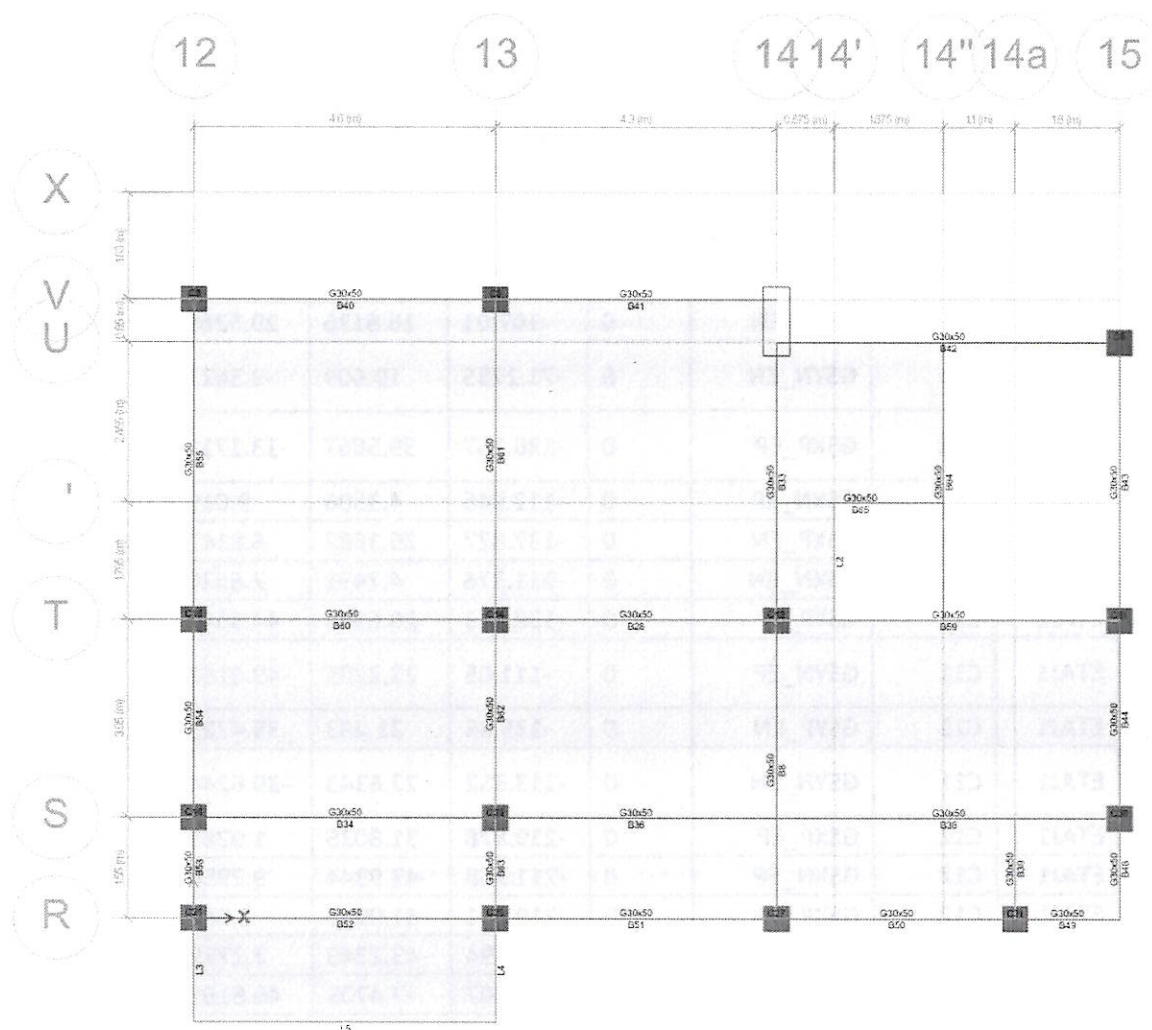
PARTER	GSYN_EP+03GSXN_EN	Combination	Y	0.001463
PARTER	GSYP_EN+03GSXP_EP	Combination	X	0.000755
PARTER	GSYP_EN+03GSXP_EP	Combination	Y	0.001673
PARTER	GSYP_EN+03GSXN_EP	Combination	X	0.000616
PARTER	GSYP_EN+03GSXN_EP	Combination	Y	0.001524
PARTER	GSYP_EN+03GSXP_EN	Combination	X	0.000691
PARTER	GSYP_EN+03GSXP_EN	Combination	Y	0.001596
PARTER	GSYP_EN+03GSXN_EN	Combination	X	0.000659
PARTER	GSYP_EN+03GSXN_EN	Combination	Y	0.001601
PARTER	GSYN_EN+03GSXP_EP	Combination	X	0.000651
PARTER	GSYN_EN+03GSXP_EP	Combination	Y	0.00155
PARTER	GSYN_EN+03GSXN_EP	Combination	X	0.00078
PARTER	GSYN_EN+03GSXN_EP	Combination	Y	0.0017
PARTER	GSYN_EN+03GSXP_EN	Combination	X	0.000694
PARTER	GSYN_EN+03GSXP_EN	Combination	Y	0.001628
PARTER	GSYN_EN+03GSXN_EN	Combination	X	0.000716
PARTER	GSYN_EN+03GSXN_EN	Combination	Y	0.001622
SUBSOL	GSXP_EP	Combination	X	6.90E-05
SUBSOL	GSXP_EP	Combination	Y	1.60E-05
SUBSOL	GSXN_EP	Combination	X	4.10E-05
SUBSOL	GSXN_EP	Combination	Y	1.10E-05
SUBSOL	GSXP_EN	Combination	X	6.50E-05
SUBSOL	GSXP_EN	Combination	Y	2.20E-05
SUBSOL	GSXN_EN	Combination	X	3.70E-05
SUBSOL	GSXN_EN	Combination	Y	1.00E-05
SUBSOL	GSYP_EP	Combination	X	1.90E-05
SUBSOL	GSYP_EP	Combination	Y	5.60E-05
SUBSOL	GSYN_EP	Combination	Y	3.60E-05
SUBSOL	GSYP_EN	Combination	X	2.40E-05
SUBSOL	GSYP_EN	Combination	Y	4.80E-05
SUBSOL	GSYN_EN	Combination	X	1.10E-05
SUBSOL	GSYN_EN	Combination	Y	3.60E-05
SUBSOL	GSXP_EP+03GSYP_EP	Combination	X	7.00E-05
SUBSOL	GSXP_EP+03GSYP_EP	Combination	Y	2.90E-05
SUBSOL	GSXP_EP+03GSYN_EP	Combination	X	6.70E-05
SUBSOL	GSXP_EP+03GSYP_EN	Combination	X	7.20E-05
SUBSOL	GSXP_EP+03GSYP_EN	Combination	Y	2.70E-05
SUBSOL	GSXP_EP+03GSYN_EN	Combination	X	6.60E-05
SUBSOL	GSXN_EP+03GSYP_EP	Combination	X	4.00E-05
SUBSOL	GSXN_EP+03GSYP_EP	Combination	Y	2.30E-05
SUBSOL	GSXN_EP+03GSYN_EP	Combination	X	4.30E-05
SUBSOL	GSXN_EP+03GSYN_EP	Combination	Y	1.40E-05
SUBSOL	GSXN_EP+03GSYP_EN	Combination	X	3.80E-05
SUBSOL	GSXN_EP+03GSYP_EN	Combination	Y	2.00E-05
SUBSOL	GSXN_EP+03GSYN_EN	Combination	X	4.40E-05
SUBSOL	GSXN_EP+03GSYN_EN	Combination	Y	1.50E-05



**BREVIAR DE CALCUL - REPARATIICAPITALE, CONSOLIDARE, RESTAURARE, EXTINDERE ȘI REFACERE  
ÎMPREJMUIRE LA SEDIUL JUDECĂTORIEI HUȘI**

SUBSOL	GSXP_EN+03GSYP_EP	Combination	X	6.60E-05
SUBSOL	GSXP_EN+03GSYP_EP	Combination	Y	3.50E-05
SUBSOL	GSXP_EN+03GSYN_EP	Combination	X	6.30E-05
SUBSOL	GSXP_EN+03GSYP_EN	Combination	X	6.80E-05
SUBSOL	GSXP_EN+03GSYP_EN	Combination	Y	3.30E-05
SUBSOL	GSXP_EN+03GSYN_EN	Combination	X	6.20E-05
SUBSOL	GSXN_EN+03GSYP_EP	Combination	X	3.60E-05
SUBSOL	GSXN_EN+03GSYP_EP	Combination	Y	1.70E-05
SUBSOL	GSXN_EN+03GSYN_EP	Combination	X	3.90E-05
SUBSOL	GSXN_EN+03GSYN_EP	Combination	Y	1.10E-05
SUBSOL	GSXN_EN+03GSYP_EN	Combination	X	3.40E-05
SUBSOL	GSXN_EN+03GSYP_EN	Combination	Y	1.50E-05
SUBSOL	GSXN_EN+03GSYN_EN	Combination	X	4.00E-05
SUBSOL	GSXN_EN+03GSYN_EN	Combination	Y	1.20E-05
SUBSOL	GSYP_EP+03GSXP_EP	Combination	X	3.50E-05
SUBSOL	GSYP_EP+03GSXP_EP	Combination	Y	5.70E-05
SUBSOL	GSYP_EP+03GSXN_EP	Combination	Y	5.50E-05
SUBSOL	GSYP_EP+03GSXP_EN	Combination	X	3.40E-05
SUBSOL	GSYP_EP+03GSXP_EN	Combination	Y	5.90E-05
SUBSOL	GSYP_EP+03GSXN_EN	Combination	Y	5.30E-05
SUBSOL	GSYN_EP+03GSXP_EP	Combination	X	2.50E-05
SUBSOL	GSYN_EP+03GSXP_EP	Combination	Y	3.60E-05
SUBSOL	GSYN_EP+03GSXN_EP	Combination	X	1.70E-05
SUBSOL	GSYN_EP+03GSXN_EP	Combination	Y	3.50E-05
SUBSOL	GSYN_EP+03GSXP_EN	Combination	X	2.40E-05
SUBSOL	GSYN_EP+03GSXP_EN	Combination	Y	3.60E-05
SUBSOL	GSYN_EP+03GSXN_EN	Combination	X	1.70E-05
SUBSOL	GSYN_EP+03GSXN_EN	Combination	Y	3.50E-05
SUBSOL	GSYP_EN+03GSXP_EP	Combination	X	4.10E-05
SUBSOL	GSYP_EN+03GSXP_EP	Combination	Y	4.90E-05
SUBSOL	GSYP_EN+03GSXN_EP	Combination	Y	4.70E-05
SUBSOL	GSYP_EN+03GSXP_EN	Combination	X	4.00E-05
SUBSOL	GSYP_EN+03GSXP_EN	Combination	Y	5.10E-05
SUBSOL	GSYP_EN+03GSXN_EN	Combination	Y	4.50E-05
SUBSOL	GSYN_EN+03GSXP_EP	Combination	X	2.00E-05
SUBSOL	GSYN_EN+03GSXP_EP	Combination	Y	3.50E-05
SUBSOL	GSYN_EN+03GSXN_EP	Combination	X	2.10E-05
SUBSOL	GSYN_EN+03GSXN_EP	Combination	Y	3.80E-05
SUBSOL	GSYN_EN+03GSXP_EN	Combination	X	1.90E-05
SUBSOL	GSYN_EN+03GSXP_EN	Combination	Y	3.60E-05
SUBSOL	GSYN_EN+03GSXN_EN	Combination	X	2.00E-05
SUBSOL	GSYN_EN+03GSXN_EN	Combination	Y	3.70E-05



**5 EFORTURI IN ELEMENTELE STRUCTURII****5.1 Eforturi in stalpi**

ETAJ	STALP	COMBINATIE	NIVEL	P	V2	V3	M2	M3
ETAJ1	C3	GSXP_EP	0	-68.0302	8.6393	18.9428	28.3409	6.4384
ETAJ1	C3	GSXN_EP	0	-108.523	-38.1688	12.2233	19.6031	-51.8162
ETAJ1	C3	GSXP_EN	0	-68.1826	6.3355	16.7415	26.0349	3.6391
ETAJ1	C3	GSXN_EN	0	-108.371	-35.865	14.4246	21.9091	-49.017
ETAJ1	C3	GSYP_EP	0	-103.711	-18.4545	29.3235	41.0621	-28.4717
ETAJ1	C3	GSYN_EP	0	-72.8427	-11.075	1.8426	6.8819	-16.9062
ETAJ1	C3	GSYP_EN	0	-103.505	-15.0001	32.6688	44.7476	-24.1629
ETAJ1	C3	GSYN_EN	0	-73.0487	-14.5294	-1.5026	3.1964	-21.215
ETAJ1	C8	GSXP_EP	0	-140.611	44.5925	21.679	30.8876	64.7411
ETAJ1	C8	GSXN_EP	0	-134.836	-42.4111	20.6538	29.9454	-61.8984
ETAJ1	C8	GSXP_EN	0	-139.887	40.2725	21.1091	30.438	58.4903
ETAJ1	C8	GSXN_EN	0	-135.56	-38.0911	21.2237	30.395	-55.6477
ETAJ1	C8	GSYP_EP	0	-153.054	-6.1873	36.6749	50.3802	-10.0005
ETAJ1	C8	GSYN_EP	0	-122.393	8.3687	5.6579	10.4528	12.8432

**BREVIAR DE CALCUL - REPARATII CAPITALE, CONSOLIDARE, RESTAURARE, EXTINDERE ȘI REFACERE  
ÎMPREJMUIRE LA SEDIUL JUDECĂTORIEI HUȘI**

ETAJ1	C8	GSYP_EN	0	-154.139	0.2102	37.5577	51.1587	-0.6901
ETAJ1	C8	GSYN_EN	0	-121.308	1.9712	4.7752	9.6743	3.5328
ETAJ1	C9	GSXP_EP	0	-101.26	38.7641	4.3953	5.8775	51.4052
ETAJ1	C9	GSXN_EP	0	-77.0249	-2.3425	15.7694	21.9794	1.0868
ETAJ1	C9	GSXP_EN	0	-102.907	36.8704	7.6282	10.0918	49.1467
ETAJ1	C9	GSXN_EN	0	-75.378	-0.4488	12.5364	17.7652	3.3453
ETAJ1	C9	GSYP_EP	0	-109.434	13.97	34.3512	48.4864	19.9606
ETAJ1	C9	GSYN_EP	0	-68.8514	22.4516	-14.1866	-	32.5315
ETAJ1	C9	GSYP_EN	0	-107.01	16.8126	29.5269	42.0801	23.45
ETAJ1	C9	GSYN_EN	0	-71.2755	19.609	-9.3623	-	29.0421
ETAJ1	C11	GSXP_EP	0	-136.257	39.5667	-13.1711	-	50.2596
ETAJ1	C11	GSXN_EP	0	-112.946	4.3506	9.019	15.1611	9.5669
ETAJ1	C11	GSXP_EN	0	-137.827	39.1682	-6.8147	-10.025	49.6898
ETAJ1	C11	GSXN_EN	0	-111.376	4.7491	2.6626	5.8304	10.1366
ETAJ1	C11	GSYP_EP	0	-138.153	20.6968	44.8642	68.5325	27.7655
ETAJ1	C11	GSYN_EP	0	-111.05	23.2205	-49.0163	-	32.061
ETAJ1	C11	GSYP_EN	0	-135.85	21.283	35.4723	54.6875	28.6126
ETAJ1	C11	GSYN_EN	0	-113.352	22.6343	-39.6244	-	31.2139
ETAJ1	C12	GSXP_EP	0	-219.878	31.8035	1.9285	2.7812	46.8956
ETAJ1	C12	GSXN_EP	0	-211.308	-43.9344	9.2954	13.8403	-62.6198
ETAJ1	C12	GSXP_EN	0	-219.691	31.0936	3.948	5.8302	45.8553
ETAJ1	C12	GSXN_EN	0	-211.494	-43.2245	7.2759	10.7912	-61.5795
ETAJ1	C12	GSYP_EP	0	-211.907	-7.4705	46.8165	70.0302	-9.8865
ETAJ1	C12	GSYN_EP	0	-219.279	-4.6605	-35.5925	-	-5.8377
ETAJ1	C12	GSYP_EN	0	-212.177	-6.4309	43.8449	65.5349	-8.3574
ETAJ1	C12	GSYN_EN	0	-219.009	-5.7001	-32.621	-	-7.3669
ETAJ1	C14	GSXP_EP	0	-182.712	41.4068	-11.19	-	59.6811
ETAJ1	C14	GSXN_EP	0	-178.146	-34.9076	-14.7569	-	-50.4762
ETAJ1	C14	GSXP_EN	0	-181.876	40.6215	-12.6209	-	58.5063
ETAJ1	C14	GSXN_EN	0	-178.982	-34.1223	-13.326	-	-49.3014
ETAJ1	C14	GSYP_EP	0	-195.733	1.9532	21.4334	30.4972	2.5065
ETAJ1	C14	GSYN_EP	0	-165.125	4.546	-47.3803	-	6.6984
ETAJ1	C14	GSYP_EN	0	-196.954	3.103	23.5764	33.349	4.2305
ETAJ1	C14	GSYN_EN	0	-163.904	3.3962	-49.5233	-	4.9744
ETAJ1	C15	GSXP_EP	0	-105.954	1.5889	-2.6431	-4.5446	-3.3092



## NOTE DE CALCUL - REALIZARE BLOC ALIMENTAR S+P+E IN CAZARMA 659 CRAIOVA

ETAJ1	C15	GSXN_EP	0	-139.846	-35.7281	-16.57	-	-44.4412
ETAJ1	C15	GSXP_EN	0	-103.682	1.1686	-7.9081	-	-3.8631
ETAJ1	C15	GSXN_EN	0	-142.118	-35.3079	-11.3051	-	-43.8873
ETAJ1	C15	GSYP_EP	0	-138.951	-18.2649	21.6353	-	-25.6441
ETAJ1	C15	GSYN_EP	0	-106.849	-15.8743	-40.8484	-	-22.1063
ETAJ1	C15	GSYP_EN	0	-142.262	-17.6454	29.4542	-	-24.818
ETAJ1	C15	GSYN_EN	0	-103.538	-16.4938	-48.6673	-	-22.9324
ETAJ1	C16	GSXP_EP	0	-56.4802	6.7656	3.96	-	4.7833
ETAJ1	C16	GSXN_EP	0	-84.8423	-30.4465	-10.9056	-	-39.7637
ETAJ1	C16	GSXP_EN	0	-52.2272	7.4072	-1.8964	-	5.3928
ETAJ1	C16	GSXN_EN	0	-89.0953	-31.0881	-5.0492	-	-40.3732
ETAJ1	C16	GSYP_EP	0	-93.3844	-11.4793	30.8645	-	-16.8533
ETAJ1	C16	GSYN_EP	0	-47.9382	-12.2016	-37.8101	-	-18.1271
ETAJ1	C16	GSYP_EN	0	-99.836	-12.4654	39.5449	-	-17.8593
ETAJ1	C16	GSYN_EN	0	-41.4865	-11.2155	-46.4905	-	-17.1211
ETAJ1	C21	GSXP_EP	0	-19.2171	5.8076	2.8352	-	-0.3792
ETAJ1	C21	GSXN_EP	0	-75.7397	-28.5002	-6.9935	-	-41.2549
ETAJ1	C21	GSXP_EN	0	-26.0465	7.2699	-0.8456	-	1.2652
ETAJ1	C21	GSXN_EN	0	-68.9103	-29.9625	-3.3126	-	-42.8994
ETAJ1	C21	GSYP_EP	0	4.2896	-9.7129	19.9904	-	-18.2252
ETAJ1	C21	GSYN_EP	0	-99.2464	-12.9797	-24.1487	-	-23.409
ETAJ1	C21	GSYP_EN	0	14.4937	-11.9221	25.5022	-	-20.8026
ETAJ1	C21	GSYN_EN	0	-109.451	-10.7705	-29.6605	-	-20.8315
ETAJ1	C23	GSXP_EP	0	-129.777	27.7849	-6.212	-	38.491
ETAJ1	C23	GSXN_EP	0	-112.479	-31.874	-8.4192	-	-44.5514
ETAJ1	C23	GSXP_EN	0	-129.203	28.8686	-7.8626	-	39.9023
ETAJ1	C23	GSXN_EN	0	-113.053	-32.9578	-6.7685	-	-45.9628
ETAJ1	C23	GSYP_EP	0	-145.613	-1.8432	31.6069	-	-2.8587
ETAJ1	C23	GSYN_EP	0	-96.6434	-2.2459	-46.2381	-	-3.2017
ETAJ1	C23	GSYP_EN	0	-146.521	-3.4762	34.071	-	-5.025
ETAJ1	C23	GSYN_EN	0	-95.735	-0.6129	-48.7022	-	-1.0354
ETAJ1	C25	GSXP_EP	0	-81.1657	36.1304	-4.0238	-	54.524
ETAJ1	C25	GSXN_EP	0	-76.8527	-29.2028	-4.0982	-	-38.8812
ETAJ1	C25	GSXP_EN	0	-83.6935	38.8402	-5.0462	-	58.3478
ETAJ1	C25	GSXN_EN	0	-74.3249	-31.9127	-3.0759	-	-42.705
ETAJ1	C25	GSYP_EP	0	-25.0685	4.9879	20.7658	-	10.2809



**BREVIAR DE CALCUL - REPARATII CAPITALE, CONSOLIDARE, RESTAURARE, EXTINDERE ȘI REFACERE  
ÎMPREJMUIRE LA SEDIUL JUDECĂTORIEI HUȘI**

ETAJ1	C25	GSYN_EP	0	-132.95	1.9396	-28.8879	-	5.3619
ETAJ1	C25	GSYP_EN	0	-21.2592	0.9564	22.3141	43.5862	4.5473
ETAJ1	C25	GSYN_EN	0	-136.759	5.9711	-30.4362	-	11.0955
ETAJ1	C27	GSXP_EP	0	-124.06	39.2477	-27.3749	-	57.6151
ETAJ1	C27	GSXN_EP	0	-132.735	-36.8082	-22.4902	-	-54.1569
ETAJ1	C27	GSXP_EN	0	-123.276	42.048	-26.6731	-	61.5943
ETAJ1	C27	GSXN_EN	0	-133.519	-39.6085	-23.192	-	-58.1361
ETAJ1	C27	GSYP_EP	0	-112.001	2.1464	-6.8354	-	2.9939
ETAJ1	C27	GSYN_EP	0	-144.794	0.2931	-43.0297	-	0.4644
ETAJ1	C27	GSYP_EN	0	-113.145	-2.0141	-7.884	-	-2.9632
ETAJ1	C27	GSYN_EN	0	-143.65	4.4535	-41.9811	-	6.4214
ETAJ1	C28	GSXP_EP	0	-110.678	29.2095	-1.1763	0.5483	36.5634
ETAJ1	C28	GSXN_EP	0	-42.8838	1.5856	-1.5773	-4.2289	7.2241
ETAJ1	C28	GSXP_EN	0	-111.889	31.3253	4.5667	8.9589	39.7237
ETAJ1	C28	GSXN_EN	0	-41.6725	-0.5301	-7.3203	-	4.0638
ETAJ1	C28	GSYP_EP	0	-77.575	28.4909	36.727	54.5866	43.6238
ETAJ1	C28	GSYN_EP	0	-75.9866	2.3042	-39.4807	-	0.1637
ETAJ1	C28	GSYP_EN	0	-75.7413	25.3537	28.2299	42.0781	38.9252
ETAJ1	C28	GSYN_EN	0	-77.8202	5.4414	-30.9835	-	4.8623
ETAJ1	C31	GSXP_EP	0	-88.7178	32.6363	-8.0271	-8.0257	45.5329
ETAJ1	C31	GSXN_EP	0	-78.0983	-22.6392	-21.3107	-	-30.9186
ETAJ1	C31	GSXP_EN	0	-83.7277	36.2062	-5.3754	-4.4896	50.8582
ETAJ1	C31	GSXN_EN	0	-83.0885	-26.2092	-23.9623	-	-36.2439
ETAJ1	C31	GSYP_EP	0	-40.679	16.1956	5.7863	6.7707	25.7426
ETAJ1	C31	GSYN_EP	0	-126.137	-6.1986	-35.124	-	-11.1282
ETAJ1	C31	GSYP_EN	0	-48.0742	10.9114	1.8224	1.3985	17.8347
ETAJ1	C31	GSYN_EN	0	-118.742	-0.9143	-31.1601	-	-3.2204
PARTER	C3	GSXP_EP	0	-141.34	32.9627	11.8706	16.5904	70.1977
PARTER	C3	GSXN_EP	0	-252.224	-45.712	1.8588	-3.4482	-83.171
PARTER	C3	GSXP_EN	0	-141.215	28.7638	6.5607	6.3926	62.1203
PARTER	C3	GSXN_EN	0	-252.349	-41.5131	7.1687	6.7496	-75.0936
PARTER	C3	GSYP_EP	0	-237.076	-8.0742	30.2119	52.8913	-10.4922
PARTER	C3	GSYN_EP	0	-156.487	-4.6751	-16.4825	-	-2.4811

## NOTE DE CALCUL - REALIZARE BLOC ALIMENTAR S+P+E IN CAZARMA 659 CRAIOVA

							39.7492	
PARTER	C3	GSYP_EN	0	-237.257	-2.1994	37.625	67.2041	0.8689
PARTER	C3	GSYN_EN	0	-156.306	-10.55	-23.8956	-54.062	-13.8422
PARTER	C8	GSXP_EP	0	-306.592	55.8776	16.5268	27.0389	97.4016
PARTER	C8	GSXN_EP	0	-293.902	-52.6009	13.6068	21.4463	-91.4273
PARTER	C8	GSXP_EN	0	-304.412	50.1757	14.7454	23.6546	87.5559
PARTER	C8	GSXN_EN	0	-296.082	-46.899	15.3882	24.8307	-81.5816
PARTER	C8	GSYP_EP	0	-340.126	-1.7684	38.2008	70.8747	-2.7302
PARTER	C8	GSYN_EP	0	-260.368	5.0451	-8.0672	-	8.7045
							22.3894	
PARTER	C8	GSYP_EN	0	-343.281	6.2479	40.6824	75.6152	11.1477
PARTER	C8	GSYN_EN	0	-257.213	-2.9712	-10.5488	-	-5.1734
							27.1299	
PARTER	C9	GSXP_EP	0	-202.743	40.5346	-4.0501	-	73.7094
							10.5498	
PARTER	C9	GSXN_EP	0	-130.203	-30.4045	7.8937	13.6268	-65.9983
PARTER	C9	GSXP_EN	0	-207.216	37.1039	1.1608	-0.7664	67.0191
PARTER	C9	GSXN_EN	0	-125.73	-26.9737	2.6828	3.8435	-59.3079
PARTER	C9	GSYP_EP	0	-218.726	2.9001	30.0464	55.958	-1.027
PARTER	C9	GSYN_EP	0	-114.22	7.23	-26.2028	-52.881	8.7381
PARTER	C9	GSYP_EN	0	-212.254	7.7013	22.7465	42.184	8.3902
PARTER	C9	GSYN_EN	0	-120.692	2.4288	-18.9029	-	-0.6791
							39.1069	
PARTER	C11	GSXP_EP	0	-259.804	42.411	-9.5451	-	79.6233
							16.0107	
PARTER	C11	GSXN_EP	0	-197.221	-29.2432	10.7244	18.53	-63.5028
PARTER	C11	GSXP_EN	0	-264.438	41.8881	-0.9881	-1.1767	78.5676
PARTER	C11	GSXN_EN	0	-192.587	-28.7203	2.1674	3.696	-62.4471
PARTER	C11	GSYP_EP	0	-265.728	5.528	48.3409	84.6196	6.029
PARTER	C11	GSYN_EP	0	-191.297	7.6398	-47.1615	-	10.0914
							82.1003	
PARTER	C11	GSYP_EN	0	-259.028	6.2665	36.2931	63.6959	7.5259
PARTER	C11	GSYN_EN	0	-197.997	6.9013	-35.1138	-	8.5945
							61.1766	
PARTER	C12	GSXP_EP	0	-427.353	55.7631	-1.618	-4.9497	101.2301
PARTER	C12	GSXN_EP	0	-406.904	-51.1234	2.8168	3.1326	-89.3369
PARTER	C12	GSXP_EN	0	-426.817	55.0711	0.4541	-1.4171	99.9492
PARTER	C12	GSXN_EN	0	-407.44	-50.4314	0.7447	-0.3999	-88.0561
PARTER	C12	GSYP_EP	0	-405.457	1.7651	41.6897	70.0151	4.5841
PARTER	C12	GSYN_EP	0	-428.8	2.8746	-40.4909	-	7.3091
							71.8322	
PARTER	C12	GSYP_EN	0	-406.235	2.7449	38.7653	65.0193	6.4022
PARTER	C12	GSYN_EN	0	-428.022	1.8948	-37.5665	-	5.491
							66.8364	
PARTER	C14	GSXP_EP	0	-363.029	49.3586	-7.4928	-	85.2676
							12.2981	
PARTER	C14	GSXN_EP	0	-358.937	-45.9842	-11.9441	-	-80.4079
							19.9044	
PARTER	C14	GSXP_EN	0	-361.155	48.6808	-9.9552	-	84.0817



**BREVIAR DE CALCUL - REPARATIICAPITALE, CONSOLIDARE, RESTAURARE, EXTINDERE ȘI REFACERE  
ÎMPREJMUIRE LA SEDIUL JUDECĂTORIEI HUȘI**

							16.5736	
PARTER	C14	GSXN_EN	0	-360.811	-45.3063	-9.4817	-15.629	-79.222
PARTER	C14	GSYP_EP	0	-395.197	1.0222	24.4792	44.8353	1.0972
PARTER	C14	GSYN_EP	0	-326.769	2.3522	-43.9161	-	3.7625
							77.0378	
PARTER	C14	GSYP_EN	0	-397.908	1.9821	27.9248	50.8347	2.7806
PARTER	C14	GSYN_EN	0	-324.058	1.3923	-47.3617	-	2.079
							83.0372	
PARTER	C15	GSXP_EP	0	-220.059	25.9794	2.925	7.9661	57.3663
PARTER	C15	GSXN_EP	0	-310.978	-43.9771	-12.7875	-	-84.9517
							19.8246	
PARTER	C15	GSXP_EN	0	-214.176	25.5099	-5.4186	-6.6258	56.3687
PARTER	C15	GSXN_EN	0	-316.861	-43.5076	-4.4439	-5.2327	-83.9541
PARTER	C15	GSYP_EP	0	-304.333	-9.6089	33.4921	61.9857	-15.2755
PARTER	C15	GSYN_EP	0	-226.704	-8.3887	-43.3546	-	-12.3099
							73.8442	
PARTER	C15	GSYP_EN	0	-312.835	-8.9479	45.2117	82.5214	-13.8629
PARTER	C15	GSYN_EN	0	-218.202	-9.0497	-55.0742	-	-13.7224
							94.3799	
PARTER	C16	GSXP_EP	0	-117.956	28.5293	6.957	12.4409	59.4876
PARTER	C16	GSXN_EP	0	-190.625	-43.0126	-10.4692	-	-80.1669
							17.0779	
PARTER	C16	GSXP_EN	0	-98.7723	30.429	-2.4347	-3.2914	63.1374
PARTER	C16	GSXN_EN	0	-209.809	-44.9123	-1.0775	-1.3455	-83.8168
PARTER	C16	GSYP_EP	0	-242.26	-7.1116	41.7528	71.0891	-9.9856
PARTER	C16	GSYN_EP	0	-66.3214	-7.3718	-45.265	-	-10.6938
							75.7261	
PARTER	C16	GSYP_EN	0	-269.999	-9.7604	54.9597	93.2431	-15.1009
PARTER	C16	GSYN_EN	0	-38.582	-4.7229	-58.4719	-	-5.5785
							97.8801	
PARTER	C21	GSXP_EP	0	-53.3415	23.556	5.3452	9.6138	54.0827
PARTER	C21	GSXN_EP	0	-217.87	-41.472	-6.8378	-	-71.6571
							11.5165	
PARTER	C21	GSXP_EN	0	-79.0912	26.6763	-1.5474	-2.1299	59.9646
PARTER	C21	GSXN_EN	0	-192.121	-44.5923	0.0548	0.2271	-77.539
PARTER	C21	GSYP_EP	0	26.5157	-8.5761	30.332	52.9495	-8.0014
PARTER	C21	GSYN_EP	0	-297.727	-9.34	-31.8245	-	-9.5731
							54.8523	
PARTER	C21	GSYP_EN	0	63.7439	-12.9363	39.9867	69.4499	-16.2605
PARTER	C21	GSYN_EN	0	-334.956	-4.9797	-41.4793	-	-1.3139
							71.3527	
PARTER	C23	GSXP_EP	0	-282.367	42.9379	-2.4874	-2.62	78.1127
PARTER	C23	GSXN_EP	0	-219.614	-42.8385	-7.1376	-	-76.0043
							10.5682	
PARTER	C23	GSXP_EN	0	-277.874	45.1507	-5.6541	-7.9254	82.0627
PARTER	C23	GSXN_EN	0	-224.108	-45.0513	-3.9709	-5.2628	-79.9542
PARTER	C23	GSYP_EP	0	-351.897	-0.0359	40.2123	69.5864	1.3226
PARTER	C23	GSYN_EP	0	-150.084	0.1352	-49.8372	-	0.7859



## NOTE DE CALCUL - REALIZARE BLOC ALIMENTAR S+P+E IN CAZARMA 659 CRAIOVA

							82.7746	
PARTER	C23	GSPY_EN	0	-358.387	-3.1292	44.6545	77.0397	-4.219
PARTER	C23	GSYN_EN	0	-143.595	3.2286	-54.2794	-	6.3275
							90.2279	
PARTER	C25	GSXP_EP	0	-212.294	49.6977	-0.1837	0.5925	83.8395
PARTER	C25	GSXN_EP	0	-208.025	-39.659	-3.3045	-5.1535	-72.2237
PARTER	C25	GSXP_EN	0	-222.372	53.8102	-2.6231	-3.5455	90.8836
PARTER	C25	GSXN_EN	0	-197.946	-43.7715	-0.8651	-1.0155	-79.2678
PARTER	C25	GSPY_EP	0	-38.9564	5.8516	30.8533	54.9783	7.5653
PARTER	C25	GSYN_EP	0	-381.362	4.1872	-34.3415	-	4.0504
							59.5393	
PARTER	C25	GSPY_EN	0	-24.3764	0.0825	34.2641	60.7812	-2.3404
PARTER	C25	GSYN_EN	0	-395.942	9.9563	-37.7524	-	13.9561
							65.3422	
PARTER	C27	GSXP_EP	0	-259.957	48.8836	-11.5704	-	83.0382
							13.5401	
PARTER	C27	GSXN_EP	0	-287.342	-47.6904	-7.9762	-6.2939	-81.0251
PARTER	C27	GSXP_EN	0	-258.13	53.0473	-10.4311	-	90.1446
							11.1047	
PARTER	C27	GSXN_EN	0	-289.169	-51.8541	-9.1155	-8.7293	-88.1316
PARTER	C27	GSPY_EP	0	-233.799	0.8236	15.9917	42.3563	2.1469
PARTER	C27	GSYN_EP	0	-313.5	0.3695	-35.5383	-	-0.1338
							62.1903	
PARTER	C27	GSPY_EN	0	-236.444	-5.0207	14.3971	38.923	-7.85
PARTER	C27	GSYN_EN	0	-310.855	6.2138	-33.9437	-58.757	9.8631
PARTER	C28	GSXP_EP	0	-275.623	40.5781	-1.7017	-7.2075	77.5301
PARTER	C28	GSXN_EP	0	-66.2524	-25.3844	1.1982	7.6012	-55.7621
PARTER	C28	GSXP_EN	0	-280.648	43.589	6.6491	7.4285	82.4342
PARTER	C28	GSXN_EN	0	-61.2272	-28.3953	-7.1527	-7.0349	-60.6662
PARTER	C28	GSPY_EP	0	-176.339	16.2995	42.7943	78.5577	21.1082
PARTER	C28	GSYN_EP	0	-165.536	-1.1058	-43.2978	-	0.6598
							78.1641	
PARTER	C28	GSPY_EN	0	-169.068	12.0694	31.0428	57.9197	14.2094
PARTER	C28	GSYN_EN	0	-172.807	3.1243	-31.5463	-57.526	7.5586
PARTER	C31	GSXP_EP	0	-188.079	48.6241	-2.899	-8.8224	87.9905
PARTER	C31	GSXN_EP	0	-177.287	-43.7222	-11.3279	-	-81.263
							10.3068	
PARTER	C31	GSXP_EN	0	-172.444	53.8754	1.819	0.052	96.7835
PARTER	C31	GSXN_EN	0	-192.921	-48.9735	-16.0459	-	-90.056
							19.1812	
PARTER	C31	GSPY_EP	0	-66.6819	9.8458	21.5012	48.4818	12.7895
PARTER	C31	GSYN_EP	0	-298.684	-4.9439	-35.7282	-67.611	-6.062
PARTER	C31	GSPY_EN	0	-89.3116	2.4586	14.8902	35.9925	0.4054
PARTER	C31	GSYN_EN	0	-276.054	2.4433	-29.1171	-	6.3221
							55.1217	
SUBSOL	C3	GSXP_EP	0	-27.4107	1.5516	2.6563	1.1467	1.1368
SUBSOL	C3	GSXP_EP	3.25	-54.6278	-62.5757	-16.049	10.6227	41.9648
SUBSOL	C3	GSXN_EP	0	-76.6291	-3.4451	-0.414	-0.3046	-1.9425
SUBSOL	C3	GSXN_EP	3.25	-156.128	80.023	-2.8377	1.0009	-52.9644

**BREVIAR DE CALCUL - REPARATII CAPITALE, CONSOLIDARE, RESTAURARE, EXTINDERE ȘI REFACERE  
ÎMPREJMUIRE LA SEDIUL JUDECĂTORIEI HUȘI**

SUBSOL	C3	GSXP_EN	0	-26.1795	1.2651	2.1325	0.8874	0.9818
SUBSOL	C3	GSXP_EN	3.25	-53.225	-55.2246	-6.9167	4.581	37.0636
SUBSOL	C3	GSXN_EN	0	-77.8603	-3.1586	0.1098	-0.0453	-1.7875
SUBSOL	C3	GSXN_EN	3.25	-157.531	72.672	-11.9701	7.0426	-48.0632
SUBSOL	C3	GSYP_EP	0	-91.0289	0.7145	7.2202	3.5714	0.2965
SUBSOL	C3	GSYP_EP	3.25	-147.166	14.6331	-50.7573	33.5502	-8.8608
SUBSOL	C3	GSYN_EP	0	-13.0108	-2.6079	-4.978	-2.7294	-1.1022
SUBSOL	C3	GSYN_EP	3.25	-63.5905	2.8142	31.8706	-21.9266	-2.1387
SUBSOL	C3	GSYP_EN	0	-92.7618	1.1179	7.9581	3.9367	0.5146
SUBSOL	C3	GSYP_EN	3.25	-149.13	4.2938	-63.5739	42.0296	-1.9671
SUBSOL	C3	GSYN_EN	0	-11.278	-3.0114	-5.7158	-3.0946	-1.3203
SUBSOL	C3	GSYN_EN	3.25	-61.6267	13.1535	44.6871	-30.406	-9.0325
SUBSOL	C8	GSXP_EP	0	-344.441	-11.7348	11.8397	12.1581	-11.3876
SUBSOL	C8	GSXN_EP	0	-359.992	16.1567	12.9558	13.2055	15.7395
SUBSOL	C8	GSXP_EN	0	-343.414	-10.2736	12.6232	12.9358	-9.9514
SUBSOL	C8	GSXN_EN	0	-361.019	14.6955	12.1723	12.4279	14.3033
SUBSOL	C8	GSYP_EP	0	-393.539	4.0034	2.0112	2.8007	4.09
SUBSOL	C8	GSYN_EP	0	-310.894	0.4185	22.7843	22.5629	0.2618
SUBSOL	C8	GSYP_EN	0	-395.058	1.9438	0.9142	1.7122	2.0656
SUBSOL	C8	GSYN_EN	0	-309.376	2.478	23.8813	23.6515	2.2862
SUBSOL	C9	GSXP_EP	0	-85.3184	4.6312	0.3159	0.276	2.4203
SUBSOL	C9	GSXP_EP	3.25	-157.349	-51.3566	7.5222	-4.0849	45.5181
SUBSOL	C9	GSXN_EP	0	-7.7803	-4.385	1.6799	0.5959	-2.2877
SUBSOL	C9	GSXN_EP	3.25	-39.8072	46.8033	-9.3385	8.5106	-38.3698
SUBSOL	C9	GSXP_EN	0	-85.7039	4.2371	0.5517	0.3883	2.2209
SUBSOL	C9	GSXP_EN	3.25	-161.88	-46.6815	0.6869	1.7406	41.6531
SUBSOL	C9	GSXN_EN	0	-7.3948	-3.9909	1.4441	0.4836	-2.0883
SUBSOL	C9	GSXN_EN	3.25	-35.2756	42.1281	-2.5032	2.685	-34.5049
SUBSOL	C9	GSYP_EP	0	-79.8754	-0.1201	3.9897	2.0046	0.0169
SUBSOL	C9	GSYP_EP	3.25	-160.606	1.1312	-39.1938	35.2006	1.5291
SUBSOL	C9	GSYN_EP	0	-13.2233	0.3663	-1.9939	-1.1327	0.1157
SUBSOL	C9	GSYN_EP	3.25	-36.5504	-5.6845	37.3775	-30.775	5.6192
SUBSOL	C9	GSYP_EN	0	-79.3066	0.4352	3.6591	1.8472	0.2979
SUBSOL	C9	GSYP_EN	3.25	-154.126	-5.4531	-29.5657	26.997	6.9682
SUBSOL	C9	GSYN_EN	0	-13.7921	-0.189	-1.6632	-0.9753	-0.1652
SUBSOL	C9	GSYN_EN	3.25	-43.0297	0.8997	27.7494	-22.5714	0.18
SUBSOL	C11	GSXP_EP	0	-58.7804	-5.3335	1.3062	0.4025	-6.6158
SUBSOL	C11	GSXN_EP	0	-48.0797	5.8278	1.2586	0.4679	7.1533
SUBSOL	C11	GSXP_EN	0	-60.7723	-5.2831	1.8411	0.6118	-6.5581
SUBSOL	C11	GSXN_EN	0	-46.0878	5.7774	0.7237	0.2586	7.0957
SUBSOL	C11	GSYP_EP	0	-71.0018	0.3225	7.6897	3.024	0.4387
SUBSOL	C11	GSYN_EP	0	-35.8583	0.1718	-5.125	-2.1536	0.0988
SUBSOL	C11	GSYP_EN	0	-68.1697	0.251	6.9392	2.7304	0.3567
SUBSOL	C11	GSYN_EN	0	-38.6905	0.2433	-4.3744	-1.86	0.1808



## NOTE DE CALCUL - REALIZARE BLOC ALIMENTAR S+P+E IN CAZARMA 659 CRAIOVA

SUBSOL	C12	GSXP_EP	0	-166.656	11.6319	-1.9784	-2.2251	6.0926
SUBSOL	C12	GSXN_EP	0	-182.884	16.9194	-3.6729	-3.785	8.2225
SUBSOL	C12	GSXP_EN	0	-166.226	11.7073	-2.2909	-2.551	6.1196
SUBSOL	C12	GSXN_EN	0	-183.314	16.8441	-3.3604	-3.4591	8.1955
SUBSOL	C12	GSYP_EP	0	-150.136	16.2653	-8.0803	-8.2279	8.0481
SUBSOL	C12	GSYN_EP	0	-199.404	12.286	2.429	2.2178	6.267
SUBSOL	C12	GSYP_EN	0	-150.745	16.1596	-7.6377	-7.766	8.0102
SUBSOL	C12	GSYN_EN	0	-198.794	12.3918	1.9863	1.7559	6.3049
SUBSOL	C14	GSXP_EP	0	-548.62	-14.0429	-9.1566	-9.2868	-13.8396
SUBSOL	C14	GSXN_EP	0	-542.918	15.0325	-8.4612	-8.6682	14.6853
SUBSOL	C14	GSXP_EN	0	-546.377	-13.8417	-8.5506	-8.6896	-13.6452
SUBSOL	C14	GSXN_EN	0	-545.161	14.8313	-9.0672	-9.2653	14.4908
SUBSOL	C14	GSYP_EP	0	-586.543	1.0607	-16.618	-	1.0813
SUBSOL	C14	GSYN_EP	0	-504.996	-0.071	-0.9999	-1.7191	-0.2356
SUBSOL	C14	GSYP_EN	0	-589.773	0.775	-17.468	-	0.8052
SUBSOL	C14	GSYN_EN	0	-501.766	0.2147	-0.1498	-0.8815	0.0405
SUBSOL	C15	GSXP_EP	0	-55.3751	-8.9399	2.1934	0.8555	-11.3211
SUBSOL	C15	GSXN_EP	0	-74.1211	1.2873	-0.0869	-0.095	1.0438
SUBSOL	C15	GSXP_EN	0	-54.1373	-8.8897	1.4585	0.5666	-11.2665
SUBSOL	C15	GSXN_EN	0	-75.3589	1.2371	0.6481	0.1939	0.9892
SUBSOL	C15	GSYP_EP	0	-72.2259	-3.7228	10.1346	4.0134	-4.924
SUBSOL	C15	GSYN_EP	0	-57.2703	-3.9299	-8.028	-3.2529	-5.3533
SUBSOL	C15	GSYP_EN	0	-74.0098	-3.7941	11.1694	4.4201	-5.0016
SUBSOL	C15	GSYN_EN	0	-55.4864	-3.8586	-9.0629	-3.6596	-5.2756
SUBSOL	C16	GSXP_EP	0	-36.1196	-6.5468	-1.1407	-0.2758	-8.6116
SUBSOL	C16	GSXN_EP	0	-75.8218	1.9337	0.023	-0.0658	2.142
SUBSOL	C16	GSXP_EN	0	-35.3852	-6.7401	-1.207	-0.3284	-8.8687
SUBSOL	C16	GSXN_EN	0	-76.5562	2.127	0.0892	-0.0132	2.399
SUBSOL	C16	GSYP_EP	0	-49.7745	-2.3886	4.1264	1.9531	-3.2839
SUBSOL	C16	GSYN_EP	0	-62.1669	-2.2245	-5.2442	-2.2948	-3.1857
SUBSOL	C16	GSYP_EN	0	-50.8457	-2.1182	4.2049	2.022	-2.9243
SUBSOL	C16	GSYN_EN	0	-61.0957	-2.4949	-5.3226	-2.3637	-3.5454
SUBSOL	C21	GSXP_EP	0	-9.168	2.366	-2.2144	-0.7588	1.1505
SUBSOL	C21	GSXP_EP	3.25	-2.8705	-47.9817	-8.8871	5.8796	32.4994
SUBSOL	C21	GSXN_EP	0	-94.6224	-4.8761	-2.5402	-1.1224	-2.4199
SUBSOL	C21	GSXN_EP	3.25	-143.083	69.553	14.5792	-9.1858	-45.709
SUBSOL	C21	GSXP_EN	0	-12.3244	2.6587	-2.2452	-0.7793	1.3037
SUBSOL	C21	GSXP_EN	3.25	-18.6628	-52.8836	2.0322	-1.3819	35.8018
SUBSOL	C21	GSXN_EN	0	-91.466	-5.1689	-2.5094	-1.1019	-2.573
SUBSOL	C21	GSXN_EN	3.25	-127.29	74.4549	3.66	-1.9243	-49.0114
SUBSOL	C21	GSYP_EP	0	1.4499	-1.196	1.0788	0.9881	-0.5501
SUBSOL	C21	GSYP_EP	3.25	33.461	6.406	-47.1297	31.9541	-4.2472
SUBSOL	C21	GSYN_EP	0	-105.24	-1.3142	-5.8334	-2.8692	-0.7193
SUBSOL	C21	GSYN_EP	3.25	-179.414	15.1653	52.8218	-	-8.9623



**BREVIAR DE CALCUL - REPARATIICAPITALE, CONSOLIDARE, RESTAURARE, EXTINDERE ȘI REFACERE  
ÎMPREJMUIRE LA SEDIUL JUDECĂTORIEI HUȘI**

SUBSOL	C21	GSYP_EN	0	5.9641	-1.6076	1.1108	1.0116	-0.766
SUBSOL	C21	GSYP_EN	3.25	56.1841	13.2756	-62.4894	42.1672	-8.8759
SUBSOL	C21	GSYN_EN	0	-109.755	-0.9026	-5.8653	-2.8928	-0.5033
SUBSOL	C21	GSYN_EN	3.25	-202.137	8.2957	68.1816	-45.4733	-4.3336
SUBSOL	C23	GSXP_EP	0	-114.974	-7.3137	-4.2009	-1.8926	-7.5463
SUBSOL	C23	GSXN_EP	0	-95.7172	9.0374	-3.2362	-1.5272	9.229
SUBSOL	C23	GSXP_EN	0	-114.143	-7.7464	-3.9031	-1.7684	-7.9976
SUBSOL	C23	GSXN_EN	0	-96.5485	9.4701	-3.534	-1.6514	9.6803
SUBSOL	C23	GSYP_EP	0	-149.709	0.9652	-6.4985	-2.496	1.0387
SUBSOL	C23	GSYN_EP	0	-60.983	0.7586	-0.9386	-0.9238	0.644
SUBSOL	C23	GSYP_EN	0	-150.88	1.5726	-6.9242	-2.6735	1.6723
SUBSOL	C23	GSYN_EN	0	-59.8112	0.1511	-0.5129	-0.7463	0.0104
SUBSOL	C25	GSXP_EP	0	-71.5968	4.4185	-8.7515	-3.8884	1.8619
SUBSOL	C25	GSXP_EP	3.25	-84.2422	-61.1912	1.6743	-0.5157	39.4053
SUBSOL	C25	GSXN_EP	0	-67.6616	-7.0894	-7.2292	-3.2702	-2.9712
SUBSOL	C25	GSXN_EP	3.25	-86.519	50.9105	6.0102	-3.6685	-33.5593
SUBSOL	C25	GSXP_EN	0	-72.3428	4.8425	-8.4952	-3.7706	2.034
SUBSOL	C25	GSXP_EN	3.25	-89.6193	-66.4237	4.9583	-2.8142	42.7381
SUBSOL	C25	GSXN_EN	0	-66.9156	-7.5134	-7.4854	-3.3879	-3.1434
SUBSOL	C25	GSXN_EN	3.25	-81.1419	56.143	2.7262	-1.37	-36.8921
SUBSOL	C25	GSYP_EP	0	-49.9819	-0.7691	-10.9459	-4.5385	-0.2919
SUBSOL	C25	GSYP_EP	3.25	4.0425	-5.9003	-40.9117	29.7329	3.6557
SUBSOL	C25	GSYN_EP	0	-89.2765	-1.9018	-5.0347	-2.6201	-0.8174
SUBSOL	C25	GSYN_EP	3.25	-174.804	-4.3804	48.5962	-33.9171	2.1902
SUBSOL	C25	GSYP_EN	0	-48.9098	-1.3663	-11.3116	-4.7066	-0.5343
SUBSOL	C25	GSYP_EN	3.25	11.7654	1.4594	-45.5196	32.9587	-1.0313
SUBSOL	C25	GSYN_EN	0	-90.3486	-1.3046	-4.6691	-2.452	-0.575
SUBSOL	C25	GSYN_EN	3.25	-182.527	-11.7401	53.2041	-37.143	6.8773
SUBSOL	C26	GSXP_EP	0	-60.2227	0.6517	1.316	0.4877	1.1833
SUBSOL	C26	GSXN_EP	0	-63.5252	-3.2081	1.7789	0.7126	-4.1894
SUBSOL	C26	GSXP_EN	0	-61.0315	0.6768	1.3191	0.5009	1.2324
SUBSOL	C26	GSXN_EN	0	-62.7164	-3.2331	1.7758	0.6994	-4.2386
SUBSOL	C26	GSYP_EP	0	-102.776	-1.363	4.0044	2.23	-1.5132
SUBSOL	C26	GSYN_EP	0	-20.9721	-1.1934	-0.9094	-1.0297	-1.4929
SUBSOL	C26	GSYP_EN	0	-101.652	-1.3981	4.0015	2.212	-1.5821
SUBSOL	C26	GSYN_EN	0	-22.0961	-1.1583	-0.9066	-1.0117	-1.4241
SUBSOL	C27	GSXP_EP	0	-52.5431	4.6307	-1.9455	-0.8014	1.9894
SUBSOL	C27	GSXP_EP	3.25	-111.104	-61.0677	13.5748	-8.8544	39.3291
SUBSOL	C27	GSXN_EP	0	-53.1422	-7.0792	-1.6501	-0.6252	-3.0264
SUBSOL	C27	GSXN_EP	3.25	-116.479	57.8259	8.0346	-5.0603	-37.7304
SUBSOL	C27	GSXP_EN	0	-51.9553	5.048	-1.9321	-0.7844	2.1608
SUBSOL	C27	GSXP_EN	3.25	-109.823	-66.331	11.6074	-7.5211	42.6951
SUBSOL	C27	GSXN_EN	0	-53.73	-7.4966	-1.6636	-0.6422	-3.1977
SUBSOL	C27	GSXN_EN	3.25	-117.759	63.0893	10.002	-6.3936	-41.0963

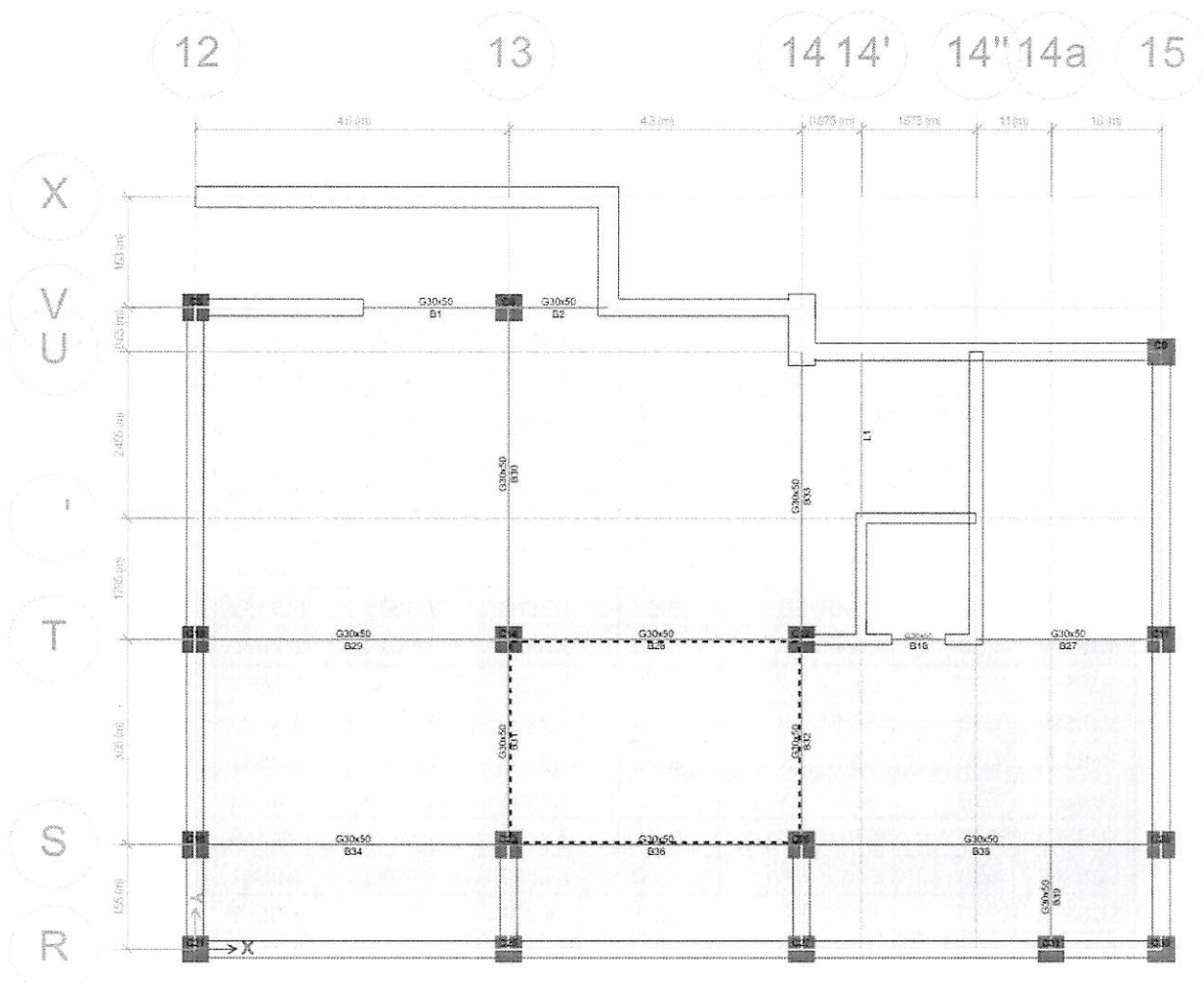
## NOTE DE CALCUL - REALIZARE BLOC ALIMENTAR S+P+E IN CAZARMA 659 CRAIOVA

SUBSOL	C27	GSYP_EP	0	-31.1988	-0.1623	0.1512	0.796	-0.0751
SUBSOL	C27	GSYP_EP	3.25	-82.3582	-1.8	-30.6467	21.4918	1.1444
SUBSOL	C27	GSYN_EP	0	-74.4865	-2.2863	-3.7469	-2.2226	-0.9618
SUBSOL	C27	GSYN_EP	3.25	-145.224	-1.4417	52.2561	35.4065	0.4544
SUBSOL	C27	GSYP_EN	0	-32.0355	-0.7505	0.1329	0.7725	-0.3164
SUBSOL	C27	GSYP_EN	3.25	-84.1917	5.605	-27.8723	19.6118	-3.5907
SUBSOL	C27	GSYN_EN	0	-73.6498	-1.6981	-3.7286	-2.199	-0.7205
SUBSOL	C27	GSYN_EN	3.25	-143.391	-8.8467	49.4816	33.5264	5.1895
SUBSOL	C28	GSXP_EP	0	-71.0292	-2.686	-1.9633	-0.7732	-3.2732
SUBSOL	C28	GSXN_EP	0	-25.1938	5.6277	-1.596	-0.4506	7.2658
SUBSOL	C28	GSXP_EN	0	-71.4689	-2.973	-1.5334	-0.5865	-3.6256
SUBSOL	C28	GSXN_EN	0	-24.7541	5.9148	-2.0258	-0.6373	7.6181
SUBSOL	C28	GSYP_EP	0	-42.8587	0.9889	4.3698	2.024	1.6054
SUBSOL	C28	GSYN_EP	0	-53.3642	1.9529	-7.929	-3.2478	2.3871
SUBSOL	C28	GSYP_EN	0	-42.2205	1.3934	3.7708	1.7634	2.102
SUBSOL	C28	GSYN_EN	0	-54.0025	1.5484	-7.33	-2.9872	1.8905
SUBSOL	C30	GSXP_EP	0	-77.9791	5.2743	-3.6454	-1.7466	2.5908
SUBSOL	C30	GSXP_EP	3.25	-5.981	2.4645	0.3432	0.0778	-0.636
SUBSOL	C30	GSXN_EP	0	-3.0869	-1.613	-1.7522	-0.6566	-1.0136
SUBSOL	C30	GSXN_EP	3.25	4.6237	-3.3306	0.0659	0.1614	0.5273
SUBSOL	C30	GSXP_EN	0	-75.7419	5.3902	-3.3283	-1.5802	2.6495
SUBSOL	C30	GSXP_EN	3.25	-5.6045	2.7912	0.8581	-0.0301	-0.7056
SUBSOL	C30	GSXN_EN	0	-5.3241	-1.7289	-2.0693	-0.823	-1.0723
SUBSOL	C30	GSXN_EN	3.25	4.2472	-3.6573	-0.449	0.2693	0.5969
SUBSOL	C30	GSYP_EP	0	-2.2529	2.1973	2.0841	1.3352	0.8998
SUBSOL	C30	GSYP_EP	3.25	4.208	1.0227	4.0665	-0.7254	-0.4002
SUBSOL	C30	GSYN_EP	0	-78.8131	1.464	-7.4817	-3.7383	0.6775
SUBSOL	C30	GSYN_EP	3.25	-5.5653	-1.8888	-3.6574	0.9645	0.2916
SUBSOL	C30	GSYP_EN	0	-5.4276	2.0419	1.6433	1.1033	0.8204
SUBSOL	C30	GSYP_EN	3.25	3.6757	0.5659	3.3439	-0.5742	-0.3033
SUBSOL	C30	GSYN_EN	0	-75.6384	1.6194	-7.0409	-3.5065	0.7568
SUBSOL	C30	GSYN_EN	3.25	-5.0329	-1.4319	-2.9348	0.8133	0.1946
SUBSOL	C31	GSXP_EP	0	-55.1823	4.9474	-1.6411	-2.1436	2.0432
SUBSOL	C31	GSXN_EP	0	-39.5686	-4.2861	-1.6365	-2.4362	-1.9038
SUBSOL	C31	GSXP_EN	0	-52.4486	5.287	-2.1647	-2.8087	2.1763
SUBSOL	C31	GSXN_EN	0	-42.3023	-4.6257	-1.1129	-1.7711	-2.0369
SUBSOL	C31	GSYP_EP	0	-22.2149	1.9433	-4.8056	-5.9936	0.6534
SUBSOL	C31	GSYN_EP	0	-72.536	-1.2819	1.528	1.4139	-0.5139
SUBSOL	C31	GSYP_EN	0	-26.1423	1.4695	-4.0678	-5.0564	0.4676
SUBSOL	C31	GSYN_EN	0	-68.6086	-0.8081	0.7902	0.4766	-0.3282



BREVIAR DE CALCUL - REPARATIICAPITALE, CONSOLIDARE, RESTAURARE, EXTINDERE ȘI REFACERE ÎMPREJMUIRE LA SEDIUL JUDECĂTORIEI HUȘI

5.2 Eforturi in grinzi



NIVEL	GRINDA	COMBINATIE	Station		V2	M3
			m		kN	kN-m
ETAJ1	B8	INF	Max	0.2	-42.3637	-2.1851
ETAJ1	B8	INF	Max	0.65	-39.2428	20.1948
ETAJ1	B8	INF	Max	1.1	-35.3955	39.953
ETAJ1	B8	INF	Max	1.55	-32.9493	62.4971
ETAJ1	B8	INF	Max	1.55	27.6521	60.7414
ETAJ1	B8	INF	Max	2.025	31.1812	54.6203
ETAJ1	B8	INF	Max	2.5	38.2069	44.6007
ETAJ1	B8	INF	Max	2.975	48.7294	27.9258
ETAJ1	B8	INF	Max	3.45	63.1443	18.834
ETAJ1	B8	INF	Max	3.925	76.6971	7.6501
ETAJ1	B8	INF	Max	4.4	84.4465	-6.7399
ETAJ1	B8	INF	Min	0.2	-108.773	-83.4259
ETAJ1	B8	INF	Min	0.65	-101.577	-45.8807